

Womens Southern Golf Association

Organized 1911

[About](#) [Membership](#) [Scholarships](#) [Senior Championship](#) [Amateur Championship](#)

[Mid-Amateur Championship](#) [Archives](#) [Links](#)

WSGA 2015 Senior Championship

Hot Springs Country Club
Arlington Course
Hot Springs, Arkansas
October 20-22, 2015
Practice round October 19th



Hot Springs Country Club established in 1898 will host the 2015 WSGA Senior Championship on its famed Arlington Course. [The Arlington Course](#) noted for steep narrow fairways and undulating greens has challenged players since 1927. The course designed by William H. Diddel and renovated in 1994 by Ben Crenshaw has been a ranked golf destination among the Ouachita foothills for generations.

Tournament Information

- [Final Results](#)
- [Starters List \(Alphabetical\) – Round 3](#)
- [Pairings List – Round 3](#)
- [Senior Flight – Round 3](#)
- [Results – Round 2](#)
- [Championship Field](#) – October 15, 2015
- [Pre-tournament Press Release](#) – October 15, 2015
- [2015 Senior Player Watch](#)

- [Entry Brochure](#)
-

Creekmore Recaptures the Senior Crown



Champion Carolyn Creekmore of Dallas, Texas

Final Press Release

WSGA Senior Championship
The Arlington Course
Hot Springs Country Club
Hot Springs, Arkansas
Oct. 20-22.

54 holes of stroke play
36 hole qualifier for flights.
Field 112
Yardage; 5241
70.6/ 124

A Repeat Seven Years in the Making

Carolyn Creekmore of Dallas, TX was all smiles as she held the same pose as pictured in the WSGA Senior Scrapbook of 2008. In Lexington, Virginia at the Lexington Country Club seven years ago, Creekmore faced the same difficult elevations change of the Hot Springs County Club's Arlington Course. "There is something about me and difficult hilly courses;" she said as she compared the two after her second round that had the scorers looking for red numbers. It was indeed that 70 written in red that launched her beyond reach of a very strong field.

Day three brought valiant charges from the field with all knowing that Creekmore could not post another subpar round with predicted winds fueling an approaching massive weather system. But all felt this past USGA and WSGA Senior Champion with her life-long experience would not falter and join the field bunched up seven strokes behind. Creekmore did not stumble posting a round of 76 aided by birdies on #7 and #12.

The real race became a race for Runner-Up. Phone texts flew quickly from spectator and spread like wildfire announcing that Tanna Richard, the Arkansas Golf Hall of Famer, had eagled #12. But, it was

two of the youngest in the field, Janet Miller and Susan West that were attacking the course like professionals. Janet Miller of Catoosa, Oklahoma, leader after the first round was determined not to stumble in this final round. Her 75-82-73 separated her from West and Richard by a stroke when the dust settled on the scoreboard. Susan West of Tuscaloosa, Alabama one of the “young guns” of senior amateur golf, posted the low round of the day with an even par round of 72 proclaimed in green on the scoreboard for all to see.

Excitement not only reigned in the Championship Flight but all six other flights as scores of flight winners proclaimed improvement each day. Lin Culver of Palm Coast, FL winner of the 2nd flight managed to improve her first round by an incredible 11 strokes. After Culver’s first round the only thing she said to the Sean Saunders of the local paper interviewing her for an ace on #17 was: “That hole-in-one was the only decent score in my entire round!”

The greatest improvement goes to a player from the (often ignored) last flight. This flight is full of club players, older seniors and those who love to travel in packs to play golf. They enter early to guarantee a spot in the 56 entries accepted by date of entry. The first 56 are by handicap index. Martha Lawhorne of Keithville, Louisiana, a retired grocery store owner, improved her first round/second round score by 12 strokes to travel back to Louisiana with a silver bowl bigger than she. The professional company handling the WSGA website rarely comments on material sent for posting. However, upon receiving the flight winners photos sent back a comment that simply said; “ I love the 6th Flight!” Take time to go to the Senior Championship page on the navigation black strip below the flag photos of this page. On this Senior Page flight winners are posted, select photos of the tournament and information specific to senior players. Scroll down to the 6th flight and take a look at tired faces that climbed what would be mountains in their home state, endured and conquered on the last day. Nancy Conravey (3rd place winner) is already excited about two facts for the 2016 tournament as she marks her calendar. There are no mountain ranges in Florida, the host state for the next WSGA Senior; and, she will have new knees freeing her from her blue handicap flag.

Everyone needs to be plotting a vacation in late October to Palm Coast, Florida.

Press Release: Round 2 Results

WSGA Senior Championship
Oct. 21, 2015
Round 2 Press Release

Red Numbers Propel a Past Champion to a 7 Shot Lead

Not expecting sub par scoring for a senior event on the Arlington Course with its challenging elevation changes, undulating greens, penal bunkers, and narrow fairways, red numbers had not been set out by the scoring committee. A scoreboard supply box had to be rummaged to find red numbers. The wrong size font was hastily found and put up until the proper size could be uncovered.

CARPENTER Janie Garland, TX	79	84	163
CARR Brenda Bentonville, AR	84	79	163
CONRAVEY Nancy Abita Springs, LA	116	102	218
CONSTANT Donna Saint Francisville, LA	86	88	174
COWAN Ann Ed City, OK	87	81	168
CREEKMORE Carolyn Dallas, TX	78	70	148

It was Carolyn Creekmore of Dallas, TX, the 2008 WSGA Senior Champion, that had the crowd gathered around the scoreboard awaiting the delivery of red numbers. Creekmore birdies on 4, 9, 11, 12, 14 were aided by a chat with her golf instructor whom she called after round 1 describing a problem that she felt in her swing. A phone fix resulted in a round Carolyn Creekmore described as “the best round in a very long time”. Creekmore, who missed the 2014 Senior recovering from shoulder surgery, was all smiles knowing her hard work of recovery had paid off in a great score on a great course.

Three players with pedigrees of southern golf are tied at 155 for second. Arkansas’ favorite women’s senior golfer Tanna Richard of Fort Smith, Taffy Brower the two time WSGA Senior Champion from Boynton, FL and the reigning WSGA Mid-Amateur Champion Gigi Higgins of Cape Coral, FL, all have the odds against them closing that 7 stroke gap.

But, scores today proved that one good round will drastically change the landscape of a tournament.

If Creekmore refuses to cool the swing of precision she found today, the real action in the final maybe a race for the title of Runner-Up.

The three at 155 have the new senior talent out of Oklahoma, Janet Miller and the two-time WSGA Senior Champion Anna Schultz of Texas just 2 back; both are very capable of making a dramatic charge.

The story line will be revealed as the sun begins its fall into the Quachita Mountain Range. The 30th WSGA Senior Champion will be crowned and her name will be recorded in the WSGA Senior record book forever.

Action starts at 9 a.m. with a shotgun start for the entire field. The public is invited to follow the final round of the 2015 WSGA Senior Championship.

Press Release: Round 1 Results

Karen Koerner
WSGA Publicity
kkamera@consolidated.net
Oct. 20, 2015

Oklahoma's Janet Miller of Catoosa Sneaks under the Radar to Lead the Senior Championship at Hot Springs Country Club.



With four former WSGA Champions in the field, the Inaugural WSGA Mid- Amateur Champion, a large group of USGA Women's Senior Championship Qualifiers and a wagon train of talent from Texas, Oklahoma was not on the player watch grid. Now, there is a big scramble to identify, Janet Miller of Catoosa, Oklahoma as she leads with a three over 75. Who is this youthful and powerful golfer that took advantage of the dry fairways and drove the ball out of the spotters visual range? With an interrogation of Oklahoma's WSGA Director Susan Hall, the story was revealed. Miller is the 2015 Oklahoma Senior Women's Champion and also the 2015 Oklahoma Women's Mid-Amateur. On top of that it seems her powerful swing played for OSU almost three decades ago.

Just one stroke back is a player always on the player watch, Taffy Brower of Boynton Beach, Fl. Taffy

Brower has been flagged as contender for both the Senior and Super Senior Title. Brower's golf game seems to never age as she won the WSGA Senior in 2004, then repeated eight year later in 2012. She also won the WSGA Amateur in 2004. And, you cannot leave out the fact that she has Florida States Golf Hall of Fame to her additional credit.

Just three strokes back of Miller are two players with outstanding WSGA credentials. Gigi Higgins of Cape Coral is the reigning WSGA Mid-Amateur Champion and Carolyn Creekmore is a former WSGA Senior Champion (2008) the 2004 USGA Women's Senior Champion and an inductee into both the Arkansas and Texas Golf Hall of Fame.

Lucie King of Tuscaloosa, AL and Janie Carpenter of Garland, TX are two other players that have flown under the player watch radar just 4 back of the leader. Tanna Richard of Arkansas Golf Hall of Fame also shot a 79; but, Richard was properly flagged as a player to watch.

The Defending Champion Kelley Nittoli of San Antonio, TX as well as Runner –up Marlene Summers of Montgomery, TX have catching up to do with six and five stroke deficits. Since this is a 54-hole event tomorrow's scores will be very important for positioning for the final press for the crown. All must not lose ground, be patient and hope for a string of putts to fall.

The excitement will be around the scoreboard in the late afternoon as the top players finish their rounds. All players will have eyes on the scoring as the flights for the final round will be determined by this 36-hole total score.

Make plans to gathering around the scoreboard as sun begins to sets on the Arlington Course.



WSGA Publicity Press Release

Oct. 20, 2015
WSGA Senior Championship
The Arlington Course
Hot Springs Country Club
Hot Springs, Arkansas
Oct. 20-22, 2015
54 holes of stroke play
36 hole qualifier for flights.
Field 112
Yardage: 5241
73.6/ 127

WELCOMING AND PRACTICE OVER TIME FOR PLAY AT THE 30 WSGA SENIOR CHAMPIONSHIP

Action starts today, Oct. 19th, as the first round of the WSGA Senior begins on the scenic hills of the Arlington Course at Hot Springs Country Club. Please visit the Senior Championship Section found above by clicking on the black strip with the senior label. Here you will find highlights of the welcome party as well as action shots taken as players practiced navigating a course carved out of the foothills

of the ancient Ouachita Mountain range.

The final yardage has been set at 5241 making the Senior Championship comparable to most ladies country club tees. However there were tales of that being “ the longest 5200 yards” from players from the plain states. In actuality, all confessed it was the greens that added strokes to their practice not the climb uphill which they could adjust with the mental gymnastics of club selecting. One solid piece of information spread like a wildfire among players as they shared in the sisterhood of golf was: DO NOT BE ABOVE THE PIN.

This is a 54 hole event; so there is still time for the nuances of the Arlington Course to be conquered by this amazing field of southern talented senior golfers.



The Hot Springs Country Club sits high on a hill above Highway 270 as you enter Hot Springs, AR. This is a side view of the massive clubhouse with double doors leading to the Pro Shop under the arch. The front of the club is around to the right and faces the Arlington Course: our host course opened in 1930. The Park Course is below the left side of the clubhouse and also features Bentgrass greens; it is a longer course with more open fairways and its own challenging water hazards. The Country Club was established in 1898 as a semi-private club. More information on the club can be found at hotspringcc.com.



HOLE #12 OF THE ARLINGTON COURSE

Locals consider this the signature hole of the Arlington Course because it made the cover of Golf

Digest in (reportedly) 1962. This photo does not do justice to the elevation changes that are actually present. Bunkers, uneven lies and tree defined fairways have made this William Dibbel design able to endure the advancements of golf equipment and player development to remain an exciting challenge.



HOLE # 8

Pat Elliott, a local member, offered this up as her favorite hole because of its natural beauty. This short par three guarded by deep bunkers, a water carry, a false front, a prevailing wind, and a postage stamp green have challenged the club ladies to believe in their club selection for generations..

Pictured is WSGA Director Pam Spikes proving that Senior golfers will have no problem facing this little challenge. Note the fan in the rear of the green cooling the Bentgrass green re-introduced when Ben Crenshaw did a minor redesign of the course in 1994.



Pam Spikes took Pat Elloitt's advice on wind and elevation and hit that postage stamp of #8. Pictured are (left to right) Pat McKamey, Susan Hall, Janie Carpenter, Pat Elloitt and Pam Spikes.



Janie Carpenter (WSGA President Elect) has to shape her tee shot to follow the tree line and fade to the left edge of this fairway. A practice round is essential for understanding the landing areas and club selections to elevated greens.



Susan Hall, Entry Chairman, proves you can hit a fairway if you take dead aim.



This worker is in charge of saving this green from heat until October brings Chamber of Commerce weather to the Course.



Considered the most challenging of the par threes, #17 just requires players to figure the downhill reduction in distance and avoid the penal bunkers.



The Arlington Resort Hotel and Spa: host hotel for the WSGA Senior

The WSGA Senior host hotel is the Arlington Hotel and Spa in downtown Hot Springs Arkansas. Even if you are not staying at the hotel, this historic landmark deserves a visit while you are in Hot Springs. This structure is the third Arlington Hotel. The first hotel built where the photo was taken (across the street in the Hot Springs National Park) was opened in 1875. The reportedly healing properties of the springs brought visitors to the waters that were discovered and used for medical purposes by the first inhabitants of the Quachita mountains. The second Arlington Hotel burned just as this present structure was being built directly across the street from the original hotels.

This hotel, opened in 1924, will give all a look into a glorious past. With 560 rooms for guests this was the center for social life, family vacations, conventions, and health seekers for 90 years. Stop by take a look at the in house museum, gawk at the Crystal Ballroom, the enormous lobby, the gilded architecture and sit on the veranda and watch the National Park tourists as they meander the

sidewalks and trails.



Those of you who are staying at the Arlington Resort Hotel and Spa need to know a few things to make your stay a special trip back into the Gilded Age of Architecture. These front steps are steeper in reality than they look. So, the bell hops are in the Valet Parking area beyond the green awning canopy of the side entrance pictured on the left of the picture. The Valet entrance will be clearly marked vertically on the side of the Hotel facing Hwy 7. Unload in this garage where extra bellhops will be available to help; then go through the large automatic doors that lead to the hotel front desk.

Valet parking is \$15 a day; so you may want to take advantage of the self parking structure just a 1/2 block beyond Valet parking. You will be given a pass for the guest garage parking at the check-in desk or at valet parking.

The drive to Hot Springs Country Club takes about 10 minutes from the Hotel. The Resort offers guest privileges to Hot Spring Country Club. You may want to take advantages of your room and play the other course while in town or an extra practice round. The owner of the Hotel also owns the Country Club.

Since the Hotel was built before the modern need for many electrical outlets; you might want to bring an extension cord. I had to unplug the lamp to plug in computer or charge my phone. But, the nostalgic trip back in time is worth bringing a cord. Note the glass door knobs of the room, the old key which you will not lose because it cost \$25 to replace. That retro tile of the bathroom is not retro but the original tile from 1924. The iron tubs of old have been replaced probably some where in the 60s decade from the look of the tubs and showers. The closet is a huge walk in closet probably because people dressed for show back in the glory years before the stock market crash of 1929. There are even shelves above the hanging area; no shelves that can hold anything in the bathroom. You might have to use the closet to store your make-up bag.

Once you get settled you need to take an adventure walk. There is Starbucks on site that opens at 6:30 a.m., dining options, a full service salon, a spa, mineral baths pumped directly from Hot Springs to the hotel, an exercise room, and a double decker outdoor pool with warm water year round accessed from the 7th floor and a shopping area in the basement.

Stroll outside and try those steps and cross the street to the Hot Springs National Park. Put your finger in the sample hot spring and guess the temperature of the water. If you are a young senior take the hike to the observation tower where you can overlook all of the area. Janie Carpenter recommends you take the drive up to the tower and save you legs for the terrain of the Arlington Course.

If you want to visit some of the enormous venue rooms that have entertained Kings and Queen, Presidents and Gangsters and icon of 9 decades just ask the staff for a look. Don't miss the Fountain Room where the pig was roasted in the enormous fireplace while the fountain warmed the room with hot water from the springs.



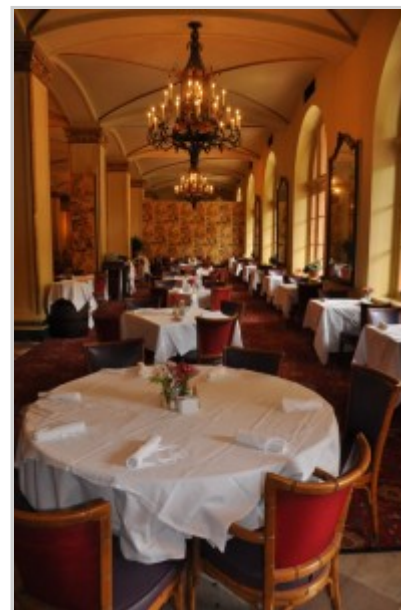
A chance to test the temperature of the water just 100 yards from the Arlington Resort Hotel and Spa.



The exercise room in the basement of the Arlington Resort Hotel



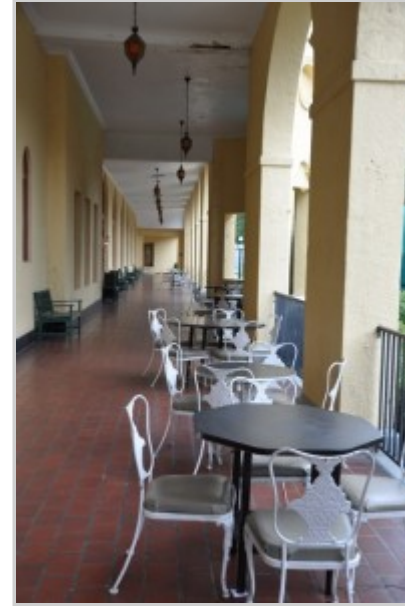
A morning stroll along the Promenade is a treat. Doctors recommended health seekers bathing in the mineral waters take a stroll afterwards for their health. Of course, some just strolled to show off the latest fashions of the day.



Breakfast is served here daily. Get a seat by the window and watch early morning joggers at the National Park. Dinner is served also here



Watching the National Park tourists from the Veranda. These trees will be golden for our visit.



The Veranda extends on both sides of the front steps.Starbucks in house makes this veranda a favorite place to gather before a round of golf or after.

2015 Amateur Champion, Sierra Brooks of Sorrento, FL



2015 Mid-Amateur Champion: Gigi Higgins of Cape Coral, FL



2014 Senior Championship Winner Kelley Nittoli



[Click to see the results of the 2014 Senior Championship](#)

2014 Super Senior Champion – Harriet Cauthen



[Click to see full results of the 2014 Senior Championship](#)

Nicole Stevenson of Richmond, TX 2015 Scholarship Winner



Click the picture to see all of our Scholarship winners

[Proudly powered by WordPress](#) | Theme: [Expound](#) by [Konstantin Kovshenin](#)

WSGA Thirtieth Senior Championship

Hot Springs Country Club - Arlington Course

Final Results

Championship

Carolyn Creekmore, Dallas, Texas - 78-70-76--224
Janet Miller, Catoosa, Okla. - 75-82-73--230
Susan West, Tuscaloosa, Ala. - 84-75-72--231
Tanna Richard, Ft. Smith, Ark. - 79-76-76--231
Anna Schultz, Rockwall, Texas - 80-77-75--232
Taffy Brower, Boynton Beach, Fla. - 76-79-77--232
Gigi Higgins, Cape Coral, Fla. - 78-77-78--233
Becky Neal, Mansfield, Texas - 83-75-83--241
Brenda Carr, Bentonville, Ark. - 84-79-80--243
Lucie King, Tuscaloosa, Ala. - 79-85-79--243
Sheila Haynes, Madison, Miss. - 82-80-81--243
Janice Wilson, Flagler Beach, Fla. - 86-77-81--244
Janie Carpenter, Garland, Texas - 79-84-81--244
Lecia Alexander, Stafford, Texas - 84-79-84--247
Kelley Nittoli, San Antonio, Texas - 81-83-84--248
Kim Cure, Iowa Park, Texas - 84-80-87--251

First Flight

Mimi Hoffman, Springfield, Va. - 83-82-77--242
Marlene Summers, Montgomery, Texas - 80-87-79--246
Anita Venner, Monrovia, Md. - 84-83-80--247
Sandra Smit, Hot Springs Village, Ark. - 87-81-81--249
Carol Turnage, Anna, Texas - 87-83-80--250
Deb Jackson, Johns Creek, Ga. - 88-80-84--252
Elsa Foley, Brandon, Miss. - 84-84-84--252
Karen Northcutt, The Woodlands, Texas - 85-83-84--252
Suzanne Kenkel, Irving, Texas - 86-82-84--252
Cindy Gilkeson, Sugar Land, Texas - 87-84-83--254
Nancy Beck, Dallas, Texas - 87-84-83--254
Carrie Hall, Bismarck, Ark. - 85-82-88--255
Ann Cowan, Elk City, Okla. - 87-81-88--256
Joan Archer, Hot Springs Village, Ark. - 82-89-87--258
Rhonda Haynes, Hot Springs Village, Ark. - 87-82-90--259
Pam Posey, Bailey, Miss. - 83-86-92--261

Second Flight

Lin Culver, Palm Coast, Fla. - 87-86-76--249
Julie Robichaux, Kingwood, Texas - 83-89-82--254
Pam Spikes, Maumelle, Ark. - 85-91-79--255
Leslie O. Henry, Carrollton, Texas - 87-85-85--257
Donna Constant, Saint Francisville, La. - 86-88-87--261
Jewell Malick, Rockwall, Texas - 86-93-82--261
Kay Crumpton, Cumby, Texas - 90-88-83--261
Linda Evers, Nashville, Tenn. - 92-85-84--261
Lindsay Wortham, Richmond, Va. - 95-80-88--263
Vicki Lea-Dees, Baton Rouge, La. - 83-92-88--263
Julia Roth, Canyon Lake, Texas - 93-84-88--265

Margaret Balch, Maidens, Va. - 89-90-86--265
Cynthia Curry, Charlotte, N.C. - 86-91-89--266
Becky Meaux, Lake Charles, La. - 87-89-95--271
Melissa Gotfredson, Irving, Texas - 88-91-93--272
Carole Ratcliffe, Ft Lauderdale, Fla. - 90-89-97--276

Third Flight

Carolyn Pazara, Arlington, Texas - 93-91-83--267
Martha McAlister, Maumelle, Ark. - 86-94-89--269
Patricia Elliott, Hot Springs, Ark. - 84-96-89--269
Liz Bartels, Cabot, Ark. - 89-97-89--275
Chris Stoute, Westlake, La. - 94-94-88--276
Mimi Evans, Maumelle, Ark. - 93-92-91--276
Pam Evans, Maumelle, Ark. - 90-95-91--276
Mary Pierson, Little Rock, Ark. - 96-89-92--277
Ann Gutter, Covington, La. - 94-94-90--278
Cynthia Birch, Cypress, Texas - 89-94-95--278
Sharon Wilson, Granbury, Texas - 97-89-92--278
Debbie Atchley, Pelham, Ala. - 96-90-95--281
Julia McKey, Slaughter, La. - 100-88-93--281
Kathy Norris, Hot Springs Village, Ark. - 99-89-96--284
Liz Oppenheimer, Bellaire, Texas - 95-87-102--284
Linda Black, Van Buren, Ark. - 99-87-100--286

Fourth Flight

Diana Henigan, Montgomery, Texas - 96-95-87--278
Louise Davis, Dallas, Texas - 93-97-91--281
Cheryl Wright, Huntsville, Texas - 90-102-90--282
Debbie Magee, Bossier City, La. - 100-93-91--284
Linda Bowser, Montgomery, Texas - 94-99-91--284
Shirley Rabuck, Woodville, Texas - 94-96-95--285
Suzzette Kirchner, Spring, Texas - 94-98-93--285
Judy Tanner, Huntsville, Texas - 95-94-97--286
Sandra Smith, Delhi, La. - 97-97-94--288
Dianne Dillard, Bryan, Texas - 96-96-98--290
Mattie Seward, Searcy, Ark. - 92-97-101--290
Margaret McGehee, Richmond, Va. - 96-96-99--291
Sandy Renner, Winnsboro, La. - 96-98-101--295
Soy Butler, Montgomery, Texas - 99-94-103--296
Judy Allardice, Aiken, S.C. - 93-101-105--299

Fifth Flight

Sharon Berken, Lake Arthur, La. - 97-103-89--289
Margie Barlow, Montgomery, Texas - 97-99-95--291
Hae Han, Bethesda, Md. - 98-102-92--292
Cassandra Groh, Hot Springs Village, Ark. - 105-96-91--292
Laura Decillis, Irmo, S.C. - 96-100-98--294
Gerrie Donovan, The Woodlands, Texas - 99-98-98--295
Rebecca Huber, Hot Springs Village, Ark. - 98-98-99--295
Kathlyn Smith, Tulsa, Okla. - 90-106-102--298
Rose Whatley, Ardmore, Okla. - 97-99-102--298
Mary Edwards, Jonesville, La. - 101-105-93--299
Renee Haugen, Hot Springs Village, Ark. - 102-97-100--299
Lynne Greene, Greenville, Texas - 99-104-97--300
Charlie Nash, Jacksonville, Ark. - 106-100-100--306
Deborah Nelson, Montgomery, Texas - 100-102-104--306
Kathe Parson, Maumelle, Ark. - 102-102-107--311
Nancy Melton, Jonesboro, Ark. - 105-103-107--315

Sixth Flight

Martha Lawhorne, Keithville, La. - 108-108-96--312
Cathy Campbell, New Orleans, La. - 111-100-102--313
Nancy Conravey, Abita Springs, La. - 116-102-98--316
Ellen Earle, Sugar Land, Texas - 104-112-101--317
Gayle Bowman, Little Rock, Ark. - 109-105-104--318
Susan McDaniel, Hoover, Ala. - 108-102-110--320
Karen Toland, Montgomery, Texas - 105-116-100--321
Bobbie Proctor, Montgomery, Texas - 106-110-106--322
Nita Pickens, Huntsville, Texas - 112-107-103--322
Dolly Wolf, Tyler, Texas - 103-117-105--325
Mary Moore, Bossier City, La. - 110-110-106--326
Phyllis Thomas, Pine Bluff, Ark. - 106-113-114--333
Nedra Wood, North Little Rock, Ark. - 114-117-104--335
Becky Masoner, Sand Springs, Okla. - 117-111-108--336
Geraldine McCool, Abita Springs, La. - 106-110-120--336



WSGA Thirtieth Senior Championship

Hot Springs Country Club - Arlington Course

Round 3 - October 22, 2015

	Tee	Time		Tee	Time		Tee	Time
Alexander, Lecia	2A	9:00	Groh, Cassandra	15B	9:00	Pierson, Mary	9B	9:00
Allardice, Judy	14A	9:00	Gutter, Ann	11A	9:00	Posey, Pam	5B	9:00
Archer, Joan	6A	9:00	Hall, Carrie	4A	9:00	Proctor, Bobbie	17A	9:00
Atchley, Debbie	10A	9:00	Han, Hae	15A	9:00	Rabuck, Shirley	11B	9:00
Balch, Margaret	8B	9:00	Haugen, Renee	15A	9:00	Ratcliffe, Carole	8B	9:00
Barlow, Margie	14B	9:00	Haynes, Rhonda	5B	9:00	Renner, Sandy	14A	9:00
Bartels, Liz	10A	9:00	Haynes, Sheila	2A	9:00	Richard, Tanna	1A	9:00
Beck, Nancy	6A	9:00	Henigan, Diana	12A	9:00	Robichaux, Julie	6B	9:00
Berken, Sharon	15A	9:00	Henry, Leslie O.	6B	9:00	Roth, Julia	8A	9:00
Birch, Cynthia	9A	9:00	Higgins, Gigi	1A	9:00	Schultz, Anna	1B	9:00
Black, Linda	10A	9:00	Hoffman, Mimi	4A	9:00	Seward, Mattie	11B	9:00
Bowman, Gayle	17A	9:00	Huber, Rebecca	14A	9:00	Smit, Sandra	5B	9:00
Bowser, Linda	13A	9:00	Jackson, Deb	5A	9:00	Smith, Kathlyn	14B	9:00
Brower, Taffy	1A	9:00	Kenkel, Suzanne	5A	9:00	Smith, Sandra	14A	9:00
Butler, Soy	13A	9:00	King, Lucie	3A	9:00	Spikes, Pam	7A	9:00
Campbell, Cathy	17A	9:00	Kirchner, Suzzette	12A	9:00	Stoute, Chris	11A	9:00
Carpenter, Janie	2A	9:00	Lawhorne, Martha	16A	9:00	Summers, Marlene	4A	9:00
Carr, Brenda	2A	9:00	Lea-Dees, Vicki	7A	9:00	Tanner, Judy	11B	9:00
Conravey, Nancy	17B	9:00	Magee, Debbie	13A	9:00	Thomas, Phyllis	18A	9:00
Constant, Donna	6B	9:00	Malick, Jewell	8B	9:00	Toland, Karen	18B	9:00
Cowan, Ann	5A	9:00	Masoner, Becky	18B	9:00	Turnage, Carol	6A	9:00
Creekmore, Carolyn	1A	9:00	McAlister, Martha	9A	9:00	Venner, Anita	4A	9:00
Crumpton, Kay	8A	9:00	McCool, Geraldine	17B	9:00	West, Susan	1B	9:00
Culver, Lin	6B	9:00	McDaniel, Susan	17A	9:00	Whatley, Rose	14B	9:00
Cure, Kim	3A	9:00	McGehee, Margaret	12A	9:00	Wilson, Janice	3A	9:00
Curry, Cynthia	8A	9:00	McKey, Julia	11A	9:00	Wilson, Sharon	10A	9:00
Davis, Louise	11B	9:00	Meaux, Becky	7A	9:00	Wolf, Dolly	18A	9:00
Decillis, Laura	14B	9:00	Melton, Nancy	16A	9:00	Wood, Nedra	18B	9:00
Dillard, Dianne	12A	9:00	Miller, Janet	1B	9:00	Wortham, Lindsay	7A	9:00
Donovan, Gerrie	15A	9:00	Moore, Mary	18A	9:00	Wright, Cheryl	13A	9:00
Earle, Ellen	17B	9:00	Nash, Charlie	16A	9:00			
Edwards, Mary	16A	9:00	Neal, Becky	1B	9:00			
Elliott, Patricia	9A	9:00	Nelson, Deborah	15B	9:00			
Evans, Mimi	9B	9:00	Nittoli, Kelley	3A	9:00			
Evans, Pam	9B	9:00	Norris, Kathy	11A	9:00			
Evers, Linda	8A	9:00	Northcutt, Karen	5B	9:00			
Foley, Elsa	5A	9:00	Oppenheimer, Liz	9A	9:00			
Gilkeson, Cindy	6A	9:00	Parson, Kathe	15B	9:00			
Gotfredson, Melissa	8B	9:00	Pazara, Carolyn	9B	9:00			
Greene, Lynne	15B	9:00	Pickens, Nita	17B	9:00			



WSGA Thirtieth Senior Championship

Hot Springs Country Club - Arlington Course

Round 3 - October 22, 2015

Tee #1A 9:00 am		Tee #7A 9:00 am		Tee #13A 9:00 am	
Carolyn Creekmore	148	Lindsay Wortham	175	Cheryl Wright	192
Tanna Richard	155	Vicki Lea-Dees	175	Debbie Magee	193
Taffy Brower	155	Pam Spikes	176	Soy Butler	193
Gigi Higgins	155	Becky Meaux	176	Linda Bowser	193
Tee #1B 9:00 am		Tee #8A 9:00 am		Tee #14A 9:00 am	
Anna Schultz	157	Cynthia Curry	177	Sandra Smith	194
Janet Miller	157	Linda Evers	177	Sandy Renner	194
Becky Neal	158	Julia Roth	177	Judy Allardice	194
Susan West	159	Kay Crumpton	178	Rebecca Huber	196
Tee #2A 9:00 am		Tee #8B 9:00 am		Tee #14B 9:00 am	
Sheila Haynes	162	Jewell Malick	179	Margie Barlow	196
Lecia Alexander	163	Margaret Balch	179	Laura Decillis	196
Brenda Carr	163	Melissa Gotfredson	179	Kathlyn Smith	196
Janie Carpenter	163	Carole Ratcliffe	179	Rose Whatley	196
Tee #3A 9:00 am		Tee #9A 9:00 am		Tee #15A 9:00 am	
Janice Wilson	163	Martha McAlister	180	Gerrie Donovan	197
Kelley Nittoli	164	Patricia Elliott	180	Renee Haugen	199
Lucie King	164	Liz Oppenheimer	182	Hae Han	200
Kim Cure	164	Cynthia Birch	183	Sharon Berken	200
Tee #4A 9:00 am		Tee #9B 9:00 am		Tee #15B 9:00 am	
Mimi Hoffman	165	Carolyn Pazara	184	Cassandra Groh	201
Marlene Summers	167	Mary Pierson	185	Deborah Nelson	202
Anita Venner	167	Pam Evans	185	Lynne Greene	203
Carrie Hall	167	Mimi Evans	185	Kathe Parson	204
Tee #5A 9:00 am		Tee #10A 9:00 am		Tee #16A 9:00 am	
Suzanne Kenkel	168	Liz Bartels	186	Mary Edwards	206
Deb Jackson	168	Linda Black	186	Charlie Nash	206
Elsa Foley	168	Debbie Atchley	186	Nancy Melton	208
Ann Cowan	168	Sharon Wilson	186	Martha Lawhorne	216
Tee #5B 9:00 am		Tee #11A 9:00 am		Tee #17A 9:00 am	
Karen Northcutt	168	Ann Gutter	188	Susan McDaniel	210
Sandra Smit	168	Julia McKey	188	Cathy Campbell	211
Pam Posey	169	Chris Stoute	188	Gayle Bowman	214
Rhonda Haynes	169	Kathy Norris	188	Bobbie Proctor	216
Tee #6A 9:00 am		Tee #11B 9:00 am		Tee #17B 9:00 am	
Carol Turnage	170	Judy Tanner	189	Ellen Earle	216
Joan Archer	171	Mattie Seward	189	Geraldine McCool	216
Cindy Gilkeson	171	Louise Davis	190	Nancy Conravey	218
Nancy Beck	171	Shirley Rabuck	190	Nita Pickens	219
Tee #6B 9:00 am		Tee #12A 9:00 am		Tee #18A 9:00 am	
Julie Robichaux	172	Diana Henigan	191	Phyllis Thomas	219
Leslie O. Henry	172	Suzzette Kirchner	192	Dolly Wolf	220
Lin Culver	173	Margaret McGehee	192	Mary Moore	220
Donna Constant	174	Dianne Dillard	192		



WSGA Thirtieth Senior Championship

Hot Springs Country Club - Arlington Course
Round 3 - October 22, 2015

Tee #18B 9:00 am

Karen Toland	221
Becky Masoner	228
Nedra Wood	231



WSGA Thirtieth Senior Championship

Gross Scores

Championship

148
Carolyn Creekmore
155
Gigi Higgins
Taffy Brower
Tanna Richard
157
Anna Schultz
Janet Miller
158
Becky Neal
159
Susan West
162
Sheila Haynes
163
Brenda Carr
Janice Wilson
Janie Carpenter
Lecia Alexander
164
Kelley Nittoli
Kim Cure
Lucie King

First Flight

165
Mimi Hoffman
167
Anita Venner
Carrie Hall
Marlene Summers
168
Ann Cowan
Deb Jackson
Elsa Foley
Karen Northcutt
Sandra Smit
Suzanne Kenkel
169
Pam Posey
Rhonda Haynes
170
Carol Turnage
171
Cindy Gilkeson
Joan Archer
Nancy Beck

Second Flight

172
Julie Robichaux
Leslie O. Henry
173
Lin Culver
174
Donna Constant
175
Lindsay Wortham
Vicki Lea-Dees
176
Becky Meaux
Pam Spikes
177
Cynthia Curry
Julia Roth
Linda Evers
178
Kay Crumpton
179
Carole Ratcliffe
Jewell Malick
Margaret Balch
Melissa Gotfredson

Third Flight

180
Martha McAlister
Patricia Elliott
182
Liz Oppenheimer
183
Cynthia Birch
184
Carolyn Pazara
185
Mary Pierson
Mimi Evans
Pam Evans
186
Debbie Atchley
Linda Black
Liz Bartels
Sharon Wilson
188
Ann Gutter
Chris Stoute
Julia McKey
Kathy Norris



WSGA Thirtieth Senior Championship

Gross Scores

Fourth Flight

189

Judy Tanner
Mattie Seward

190

Louise Davis
Shirley Rabuck

191

Diana Henigan

192

Cheryl Wright
Dianne Dillard
Margaret McGehee
Suzzette Kirchner

193

Debbie Magee
Linda Bowser
Soy Butler

194

Judy Allardice
Sandra Smith
Sandy Renner

Fifth Flight

196

Kathlyn Smith
Laura Decillis
Margie Barlow
Rebecca Huber
Rose Whatley

197

Gerrie Donovan

199

Renee Haugen

200

Hae Han
Sharon Berken

201

Cassandra Groh

202

Deborah Nelson

203

Lynne Greene

204

Kathe Parson

206

Charlie Nash
Mary Edwards

208

Nancy Melton

Sixth Flight

210

Susan McDaniel

211

Cathy Campbell

214

Gayle Bowman

216

Bobbie Proctor

Ellen Earle

Geraldine McCool

Martha Lawhorne

218

Nancy Conravey

219

Nita Pickens

Phyllis Thomas

220

Dolly Wolf

Mary Moore

221

Karen Toland

228

Becky Masoner

231

Nedra Wood



WSGA Thirtieth Senior Championship

Gross Scores

1 Carolyn Creekmore, Dallas, TX	78-70--148	44 Kay Crumpton, Cumby, TX	90-88--178
T2 Tanna Richard, Ft. Smith, AR	79-76--155	T45 Jewell Malick, Rockwall, TX	86-93--179
Taffy Brower, Boynton Beach, FL	76-79--155	Margaret Balch, Maidens, VA	89-90--179
Gigi Higgins, Cape Coral, FL	78-77--155	Melissa Gotfredson, Irving, TX	88-91--179
T5 Anna Schultz, Rockwall, TX	80-77--157	Carole Ratcliffe, Ft Lauderdale, FL	90-89--179
Janet Miller, Catoosa, OK	75-82--157	T49 Patricia Elliott, Hot Springs, AR	84-96--180
7 Becky Neal, Mansfield, TX	83-75--158	Martha McAlister, Maumelle, AR	86-94--180
8 Susan West, Tuscaloosa, AL	84-75--159	51 Liz Oppenheimer, Bellaire, TX	95-87--182
9 Sheila Haynes, Madison, MS	82-80--162	52 Cynthia Birch, Cypress, TX	89-94--183
T10 Lecia Alexander, Stafford, TX	84-79--163	53 Carolyn Pazara, Arlington, TX	93-91--184
Janie Carpenter, Garland, TX	79-84--163	T54 Pam Evans, Maumelle, AR	90-95--185
Janice Wilson, Flagler Beach, FL	86-77--163	Mimi Evans, Maumelle, AR	93-92--185
Brenda Carr, Bentonville, AR	84-79--163	Mary Pierson, Little Rock, AR	96-89--185
T14 Kim Cure, Iowa Park, TX	84-80--164	T57 Liz Bartels, Cabot, AR	89-97--186
Lucie King, Tuscaloosa, AL	79-85--164	Linda Black, Van Buren, AR	99-87--186
Kelley Nittoli, San Antonio, TX	81-83--164	Debbie Atchley, Pelham, AL	96-90--186
17 Mimi Hoffman, Springfield, VA	83-82--165	Sharon Wilson, Granbury, TX	97-89--186
T18 Marlene Summers, Montgomery, TX	80-87--167	T61 Chris Stoute, Westlake, LA	94-94--188
Carrie Hall, Bismarck, AR	85-82--167	Ann Gutter, Covington, LA	94-94--188
Anita Venner, Monrovia, MD	84-83--167	Kathy Norris, Hot Springs Village, AR	99-89--188
T21 Ann Cowan, Elk City, OK	87-81--168	Julia McKey, Slaughter, LA	100-88--188
Elsa Foley, Brandon, MS	84-84--168	T65 Judy Tanner, Huntsville, TX	95-94--189
Deb Jackson, Johns Creek, GA	88-80--168	Mattie Seward, Searcy, AR	92-97--189
Suzanne Kenkel, Irving, TX	86-82--168	T67 Louise Davis, Dallas, TX	93-97--190
Karen Northcutt, The Woodlands, TX	85-83--168	Shirley Rabuck, Woodville, TX	94-96--190
Sandra Smit, Hot Springs Village, AR	87-81--168	69 Diana Henigan, Montgomery, TX	96-95--191
T27 Pam Posey, Bailey, MS	83-86--169	T70 Suzette Kirchner, Spring, TX	94-98--192
Rhonda Haynes, Hot Springs Village, AR	87-82--169	Margaret McGehee, Richmond, VA	96-96--192
29 Carol Turnage, Anna, TX	87-83--170	Dianne Dillard, Bryan, TX	96-96--192
T30 Nancy Beck, Dallas, TX	87-84--171	Cheryl Wright, Huntsville, TX	90-102--192
Joan Archer, Hot Springs Village, AR	82-89--171	T74 Linda Bowser, Montgomery, TX	94-99--193
Cindy Gilkeson, Sugar Land, TX	87-84--171	Soy Butler, Montgomery, TX	99-94--193
T33 Leslie O. Henry, Carrollton, TX	87-85--172	Debbie Magee, Bossier City, LA	100-93--193
Julie Robichaux, Kingwood, TX	83-89--172	T77 Sandy Renner, Winnsboro, LA	96-98--194
35 Lin Culver, Palm Coast, FL	87-86--173	Sandra Smith, Delhi, LA	97-97--194
36 Donna Constant, Saint Francisville, LA	86-88--174	Judy Allardice, Aiken, SC	93-101--194
T37 Lindsay Wortham, Richmond, VA	95-80--175	T80 Rose Whatley, Ardmore, OK	97-99--196
Vicki Lea-Dees, Baton Rouge, LA	83-92--175	Margie Barlow, Montgomery, TX	97-99--196
T39 Pam Spikes, Maumelle, AR	85-91--176	Rebecca Huber, Hot Springs Village, AR	98-98--196
Becky Meaux, Lake Charles, LA	87-89--176	Kathlyn Smith, Tulsa, OK	90-106--196
T41 Cynthia Curry, Charlotte, NC	86-91--177	Laura Decillis, Irmo, SC	96-100--196
Linda Evers, Nashville, TN	92-85--177	85 Gerrie Donovan, The Woodlands, TX	99-98--197
Julia Roth, Canyon Lake, TX	93-84--177	86 Renee Haugen, Hot Springs Village, AR	102-97--199



WSGA Thirtieth Senior Championship

Gross Scores

T87	Hae Han, Bethesda, MD	98-102--200
	Sharon Berken, Lake Arthur, LA	97-103--200
89	Cassandra Groh, Hot Springs Village, AR	105-96--201
90	Deborah Nelson, Montgomery, TX	100-102--202
91	Lynne Greene, Greenville, TX	99-104--203
92	Kathe Parson, Maumelle, AR	102-102--204
T93	Mary Edwards, Jonesville, LA	101-105--206
	Charlie Nash, Jacksonville, AR	106-100--206
95	Nancy Melton, Jonesboro, AR	105-103--208
96	Susan McDaniel, Hoover, AL	108-102--210
97	Cathy Campbell, New Orleans, LA	111-100--211
98	Gayle Bowman, Little Rock, AR	109-105--214
T99	Ellen Earle, Sugar Land, TX	104-112--216
	Martha Lawhorne, Keithville, LA	108-108--216
	Geraldine McCool, Abita Springs, LA	106-110--216
	Bobbie Proctor, Montgomery, TX	106-110--216
103	Nancy Conravey, Abita Springs, LA	116-102--218
T104	Phyllis Thomas, Pine Bluff, AR	106-113--219
	Nita Pickens, Huntsville, TX	112-107--219
T106	Mary Moore, Bossier City, LA	110-110--220
	Dolly Wolf, Tyler, TX	103-117--220
108	Karen Toland, Montgomery, TX	105-116--221
109	Becky Masoner, Sand Springs, OK	117-111--228
110	Nedra Wood, North Little Rock, AR	114-117--231
111	Donna Hagan, Montgomery, TX	117-WD--WD
112	Beverly Knapp, Monterey, LA	104-WD--WD

PLAYER LIST AS OF OCTOBER 15

<u>Name</u>	<u>City/State</u>	<u>Club</u>	<u>HI</u>
Alexander, Lecia	Stafford, TX	Riverbend CC	1.7
Archer, Joan	Hot Springs Village, AR	Hot Springs Village	4.1
Atchley, Debbie	Pelham, AL	Ballentine CC	12.0
Balch, Margaret	Maidens, VA	Hermitage CC	5.0
Barlow, Margie	Montgomery, TX	Walden on Lake Conroe	13.6
Bartels, Liz	Cabot, AR	Rolling Hill CC	6.0
Beck, Nancy	Dallas, TX	Brook Hollow GC	4.8
Berken, Sharon	Lake Arthur, LA	Jennings GC	12.4
Birch, Cynthia	Cypress, TX	Blackhorse GC	7.2
Black, Linda	Van Buren, AR	Eagle Crest Golf Course	7.2
Blackmon, Evelyn	Nashville, TN	Belle Meade CC	8.8
Bowser, Linda	Montgomery, TX	Walden on Lake Conroe	13.0
Brower, Taffy	Boynton Beach, FL	Delray Dunes G&CC	1.2
Butler, Soy	Montgomery, TX	Bentwater CC	12.2
Campbell, Cathy	New Orleans, LA	English Turn G&CC	18.0
Carpenter, Janie	Garland, TX	Hurricane Creek CC	2.5
Carr, Brenda	Bentonville, AR	Lost Springs Golf & Athletic Club	2.0
Conravey, Nancy	Abita Springs, LA	Money Hill G&CC	15.2
Constant, Donna	Saint Francisville, LA	The Bluffs Resort	11.4
Cowan, Ann	Elk City, OK	Elk City Golf & Country Club	7.4
Creekmore, Carolyn	Dallas, TX	Brook Hollow GC	+0.6
Crumpton, Kay	Cumby, TX	Webb Hill CC	6.9
Culver, Lin	Palm Coast, FL	Hammock Beach Resort	4.8
Cure, Kim	Iowa Park, TX	Wichita Falls CC	5.2
Curry, Cynthia	Charlotte, NC	Myers Park CC	6.1
Davis, Louise	Dallas, TX	Vernon's Royal & Ancients GC	7.3
Decillis, Laura	Irmo, SC	Woodside Plantation CC	14.1
Dillard, Dianne	Bryan , TX	Briarcrest CC	11.3
Donovan, Gerrie	The Woodlands, TX	The Woodlands CC	13.3
Earle, Ellen	Sugar Land, TX	Riverbend CC	18.2
Edwards, Mary	Jonesville, LA	LaSalle Golf & CC	11.6
Elliott, Patricia	Hot Springs, AR	Hot Springs CC	8.3
Evans, Mimi	Maumelle, AR	Country Club of Arkansas	8.2
Evans, Pam	Maumelle, AR	Hot Springs Village	8.1
Evers, Linda	Nashville, TN	Belle Meade CC	6.3
Foley, Elsa	Brandon, MS	Castlewood CC	6.9
Gilkeson, Cindy	Sugar Land, TX	Riverbend CC	4.2
Gotfredson, Melissa	Irving, TX	Texas Star Golf Course	6.3
Green, Lynne	Greenville, TX	Webb Hill CC	11.0
Groh, Cassandra	Hot Springs Village, AR	Hot Springs Village	9.8
Gutter, Ann	Covington, LA	Tchefuncta CC	9.0
Hagan, Donna	Montgomery, TX	Bentwater CC	21.0
Hall, Carrie	Bismarck, AR	Hot Springs CC	7.3
Han, Hae	Bethesda, MD	TPC Potomac at Avenel Farm	10.1
Haynes, Rhonda	Hot Springs Village, AR	Hot Springs Village	7.8
Haynes, Sheila	Madison, MS	Deerfield CC	4.7
Henigan, Diana	Montgomery, TX	Bentwater CC	8.5

0 Total Players

Sorted by Alpha

Printed by:Tournament Pairing Program Onlineon 10/15/2015 6:49 PM

Page:1

Player report/ As of June 1, 2014 for Calligrapher

<u>Name</u>	<u>City/State</u>	<u>Club</u>	<u>HI</u>
Henry, Leslie O.	Carrollton, TX	Brookhaven CC	2.4
Higgins, Gigi	Cape Coral, FL	Palmetto-Pines CC	1.4
Hoffman, Mimi	Springfield, VA	Belle Haven CC	0.0
Huber, Rebecca	Hot Springs Village, AR	HSV/AWGA/ASGA	11.3
Jackson, Deb	Johns Creek, GA	Rivermont GC	4.8
Kenkel, Suzanne	Irving, TX	The Sports Club at Four Seasons	4.5
King, Lucie	Tuscaloosa, AL	Indian Hills CC	4.4
Kirchner, Suzzette	Spring, TX	Blackhorse GC	8.3
Knapp, Beverly	Monterey, LA	Panola Woods CC	14.6
Lawhorne, Martha	Keithville, LA	Fox Run	18.6
Lea-Dees, Vicki	Baton Rouge , LA	Greystone CC	8.8
Magee, Debbie	Bossier City, LA	Golf Club at Stonebridge	10.1
Malick, Jewell	Rockwall, TX	The Honors Club	3.6
Masoner, Becky	Sand Springs, OK	Page Belcher	16.5
McAlister, Martha	Maumelle, AR	Hot Springs Village	6.6
McCool, Geraldine	Abita Springs, LA	Money Hill G&CC	21.6
McDaniel, Susan	Hoover, AL	Ballantrae GC	19.0
McGehee, Margaret	Richmond, VA	The Country Club of Virginia	9.5
McKey, Julia	Slaughter , LA	Westlake WGA	9.9
Meaux, Becky	Lake Charles, LA	Gray Plantation GC	11.5
Melton, Nancy	Jonesboro, AR	Jonesboro CC	18.4
Meyer, Donna Kay	Nassau Bay, TX	Cannongate-South Shore Harbour	5.8
Miller, Janet	Catoosa, OK	Broken Arrow Golf & Athletic Club	3.1
Moore, Mary	Bossier City, LA	Fox Run/ Barksdale AFB	18.2
Nash, Charlie	Jacksonville, AR	Rolling Hill CC	13.4
Neal, Becky	Mansfield, TX	Walnut Creek CC	1.2
Nelson, Deborah	Montgomery, TX	Walden on Lake Conroe	17.4
Nittoli, Kelley	San Antonio, TX	San Antonio CC	1.8
Norris, Kathy	Hot Springs Village, AR	Hot Springs Village	12.5
Northcutt, Karen	The Woodlands, TX	The Woodlands CC	7.4
Oppenheimer, Liz	Bellaire, TX	Riverbend CC	12.2
Parson, Kathe	Maumelle, AR	Maumelle CC	15.3
Pazara, Carolyn	Arlington, TX	Walnut Creek CC	4.4
Pickens, Nita	Huntsville, TX	Elkins Lake Women's Golf	14.9
Pierson, Mary	Little Rock, AR	Chenal CC	6.9
Posey, Pam	Bailey, MS	Northwood CC	4.6
Proctor, Bobbie	Montgomery, TX	Bentwater CC	15.0
Rabuck, Shirley	Woodville, TX	Bentwater CC	13.4
Ratcliffe, Carole	Ft Lauderdale, FL	Coral Ridge CC	10.0
Renner, Sandy	Winnsboro, LA	Calvert Crossing	12.4
Richard, Tanna	Ft. Smith, AR	Hardscrabble CC	0.6
Robichaux, Julie	Kingwood, TX	The Clubs of Kingwood	1.9
Robinson, Eliza	Houston, TX	Cordillera Ranch	13.9
Roth, Julia	Canyon Lake, TX	Cordillera Ranch	6.9
Schultz, Anna	Rockwall, TX	The Honors Club	+0.7
Seward, Mattie	Searcy, AR	Searcy CC	12.4
Smit, Sandra	Hot Springs Village, AR	Hot Springs Village	8.6

0 Total Players

Sorted by Alpha

Printed by:Tournament Pairing Program Online on 10/15/2015 6:49 PM

Page:2

Player report/ As of June 1, 2014 for Calligrapher

<u>Name</u>	<u>City/State</u>	<u>Club</u>	<u>HI</u>
Smith, Kathlyn	Tulsa, OK	Golf Club of OK	16.1
Smith, Sandra	Delhi, LA	LaSalle G&CC	10.0
Spikes, Pam	Maumelle, AR	Hot Springs Village	2.5
Stoute, Chris	Westlake, LA	The National Golf Course of LA	10.8
Summers, Marlene	Montgomery, TX	Bentwater CC	1.4
Tanner, Judy	Huntsville, TX	Elkins Lake Women's Golf	11.9
Thomas, Phyllis	Pine Bluff, AR	Harbor Oaks	18.9
Turnage, Carol	Anna, TX	Stonebridge Ranch CC	4.0
Venner, Anita	Monrovia, MD	MSGA e-club	6.4
West, Kathy	Tulsa, OK	Southern Hills CC	4.2
West, Susan	Tuscaloosa, AL	North River Yacht Club	+0.3
Whatley, Rose	Ardmore, OK	Dornick Hills CC	16.4
Wilson, Janice	Flagler Beach, FL	FSGA Type III Club	3.6
Wilson, Sharon	Granbury, TX	Pecan Plantation CC	12.2
Wolf, Dolly	Tyler, TX	Willow Brook CC	16.2
Wood, Nedra	North Little Rock, AR	Country Club of Arkansas	17.9
Wortham, Lindsay	Richmond, VA	The Country Club of Virginia	2.3
Wright, Cheryl	Huntsville, TX	Elkins Lake Women's Golf	13.2

0 Total Players

Sorted by Alpha

Printed by:Tournament Pairing Program Onlineon 10/15/2015 6:49 PM

Page:3

Women's Southern Golf Association, Inc.
30th playing of the Senior Amateur
Oct. 20-22, 2015



Karen Koerner
WSGA Publicity
kkamera@consolidated.net
Oct. 15, 2015

Pre-tournament Press Release
WSGA Senior Championship
The Arlington Course
Hot Springs Country Club
Hot Springs, Arkansas
Oct. 20-22.

54 holes of stroke play
36 hole qualifier for flights.
Field 112
Yardage; 5292
73.6/ 127

Autumn leaves + The WSGA + Hot Springs, Arkansas

= A Record Wait-listed Entry

Susan Hall WSGA Entry Chairman was totally surprised at the entry response to the 30th playing of the WSGA Senior Championship. She had to close entry early when the wait list broke the Inaugural wait list long standing record of 27 set in 1986 by an additional 19. Is it the

healing waters of the infamous Hot Springs National Park, the promise of Arkansas fall foliage among the Ouachita Mountains, the historical Hot Springs Country Club as host club, or just time for a vacation that has produced this entry phenomena?

Whatever the reason for the full wait listed field of senior women, the WSGA welcomes a strong field from 12 of the 15 Southern States.

The field is set at 112 with 56 of the players representing the lowest handicaps; the second 56 are entered according to date of receipt of entry with a 23.5 or above handicap requirement. The cut for the low 56 is another record breaker at 8.1.

The field is stacked with a defending champion, three more former champions and a player watch that is a who's who of southern women's amateur golf. Three States have entries that are also found in their Golf Hall of Fames. Four players made the cut at the USGA Senior Amateur, five more qualified and two have USGA Titles in their resume. And one player is the reigning WSGA Mid-Amateur Champion.

States that might have a viable chance at a title are as follows.

TEXAS

Defending champion Kelley Nittoli of San Antonio will lead the Texas charge followed by two former WSGA Senior Champions, Carolyn Creekmore of Dallas 2008 and Anna Schultz of Rockwall 2006-2007. Nittoli brings her youthful swing of collegiate days having just reached the magic age of 50 in 2014, while Creekmore and Schultz bring USGA Senior Titles and Hall of Fame by their names. Creekmore was inducted into both the Arkansas and Texas Golf Hall of fame in 2010. Schultz was inducted into the Texas Golf Hall of fame in 2013. With 43 entries Texas plans on taking a wagon train of silver back to Texas. You can never count out some bridesmaids stealing the show as the player watch proclaims a few more dangerous Texas talents: Nancy Beck of Dallas, Leslie O. Henry of Carrollton, Becky Neal of Mansfield, Karen Northcutt of the Woodlands, Julie Robichaux of Kingwood, and Marlene Summers of Montgomery.

ARKANSAS

Arkansas has the second largest entry led by Tanna Richard of Fort Smith, Brenda Carr of Bentonville, and Pam Spikes of Maumelle. Richard has Hall of Fame by her named inducted in 2006 into the Arkansas Golf Hall of Fame. Carr just won the Arkansas Senior Match Play title. Spikes may know just enough nuances of the Arlington Course to have an advantage. It may all come down to practice and tournament enhanced knowledge of those Bentgrass greens and extreme elevation changes.

FLORIDA

Florida has 6 entries led by Gigi Higgins of Cape Coral, the youthful senior who captured the Inaugural WSGA Mid-Amateur. Although the Mid-Amateur was a match play event, Higgins can go low in stroke play holding her home course record of 68. Two more superior talents back up Higgins as possible contenders. Florida State Golf Hall of Fame member, Taffy Brower of Boynton Beach has two WSGA Senior Titles (2004 & 2012) and a WSGA Amateur title of 2004. Note, that although two other players (Toni Wiesner and Martha Jones Lang) have won both the WSGA Amateur and Senior, only Brower has won the event the same year. This record may stand forever. Janice Wilson of Flagler Beach made a strong statement as Quarterfinalist at the Inaugural WSGA Mid-Amateur in June. She attributes her new found success to retirement providing time to practice her first love, golf.

VIRGINIA

Mimi Hoffman of Springfield was runner up to Brower in the 2012 battle for the senior title. Hoffman just returned from playing those uneven lies in Nashville, TN after making the cut at the USGA Women's Senior.

ALABAMA

Susan West of Tuscaloosa made the cut for the USGA Women's Senior for the second year in a row. She gained special status having reached

the quarterfinals in her debut as a senior in 2014. As a rookie senior she finished fourth at the 2014 WSGA Senior.

GEORGIA

Deb Jackson of Johns Creek is Georgia's lone entry. After a successful business career Jackson has retired and returned to tournament play. As a course rater for the State of Georgia she has played all the elevated hilly courses of Georgia and understands what makes a slope rating. 2014 was her WSGA debut and she went home with First Flight honors.

LOUISIANA

The Pelican State has the third highest number of entries; but none of their entries made the 8.1 handicap entry cut. They all entered early to capture their spot and will go home with flight silver.

Two states: West Virginia and Kentucky and the District of Columbia are missing this year from the 16 areas of membership defined in 1911 when the WSGA was former in Atlanta, GA.

MISSISSIPPI

Pam Posey of Bailey and Sheila Haynes of Madison will most likely make the Championship Flight from their consistent record in past senior events. With State titles by both names, they could be scary if others falter in adapting to the greens and elevation changes.

NORTH CAROLINA

North Carolina is home to the Super Senior whose golf game never ages. Cynthia Curry of Charlotte captured the Super Senior Perpetual Trophy established in 1989 in 2012 then followed up as Co-Super Senior Champion in 2013. Curry will face Louise Davis who gained her super status last year turning 70 in 2014. Taffy Brower, the afore mentioned WSGA Amateur and Senior Champion from Boynton, FL, will replace Davis as the "super rookie" this year. With a win Brower could rewrite WSGA history by holding three WSGA titles, proving that this sport is indeed a lifetime sport.

While Tennessee and Maryland will be bringing players to round out the field and maybe go home with flight silver; West Virginia, South Carolina, Kentucky, and D.C all whom had seniors qualify for the USGA Women's Senior are not making the trip to Arkansas this year.

This is Arkansas third hosting of the WSGA Senior. In 2001 Harbor Oaks Golf Club Pine Bluff hosted the WSGA just 14 days after the terrorist attack of 9/11. Amazingly 92 players competed proving that southern women would carry on with golf travel plans and not let foreign attacks control them with fear. In 2010 Texarkana Country Club of Texarkana, Arkansas was the host of the WSGA with a real battle between Arkansas and Texas for the most players.

Today, the City of Hot Springs, awaits the arrival of a full field of senior women golfers. The Hot Springs Country Club's General Manager and Director of Golf, Barry Howard, has worked closely with Interim President Linda Carter in arranging a real Southern Welcome to the National Park City, the Hot Springs Country Club and the herald Arlington Course. Behind every WSGA event are these unsung heroes of the Host Club and Country Club staff. Please thank the Host Club, Chairman, Betty Kate Carney, and the country club members and staff for opening their prized course and prestigious club to the southern women.

The Arlington Course designed by William H. Diddel opened in 1932 and underwent some redesigning in 1994 by Ben Crenshaw. Here you will find narrow fairways, elevation changes, Bermuda grass fairways and Bentgrass greens. Set in the beautiful foothills of the Ouachita Mountain range the course has been a favorite of visitors to Arkansas for eight-one years.

Action begins Monday Oct. 19th with practice rounds followed by two days of qualifying for Flights. The scoreboard on Wednesday the 21st will be the center of activity as the Championship flight is determined. The public is welcome to come and follow the final stroke play round on Thursday the 22nd. A shotgun start will have all in for awards shortly after Noon when the 30th WSGA Senior Champion will be crowned.

Check the full list of contestants on our website and be sure to meet some of the ladies who call this area home. Both Patricia Elliot and Carrie Hall call the country club their home course. Others from nearby Hot Springs Village will also be sleeping in their own beds and have some local knowledge of uneven lies and club selections for elevation changes. Hot Springs Village sends Joan Archer, Cassandra Groh, Rebecca Huber, Kathy Norris and Sandra Smit.

Please check the Senior Championship landing on the black information strip of our web for more information on the tournament and host hotel as well as archives for a history of our 30 years of providing a Senior Championship.

SOUTH CAROLINA

South Carolina has two seasoned golfers who had to be patient on the wait list until a spot opened up for them. WSGA Director Judy Allardice of Aiken gave her spot to a fellow South Carolinian only to return to the field with an emergency cancellation. At the Inaugural Senior in 1986, there were a group of golfers on the wait-list make the trip to Florida, stayed in hotels and waited in hope of such an emergency cancellation.

While Oklahoma, Tennessee and Maryland will be bringing players to round out the field and maybe go home with flight silver; West Virginia, Kentucky, and D.C all whom had seniors qualifiers for the USGA Women's Senior are not making the trip to Arkansas this year.



[About](#) [Membership](#) [Scholarships](#) [Senior Championship](#) [Amateur Championship](#)

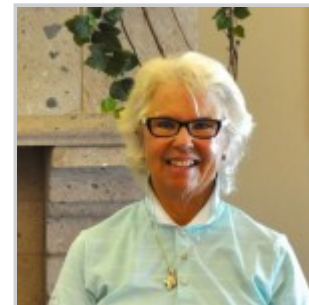
[Mid-Amateur Championship](#) [Archives](#) [Links](#)

2015 Senior Player Watch

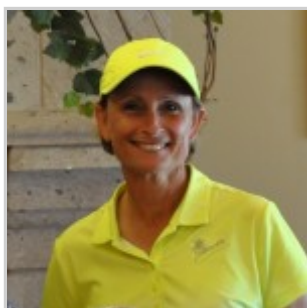
Four Past Champions Grace the Field



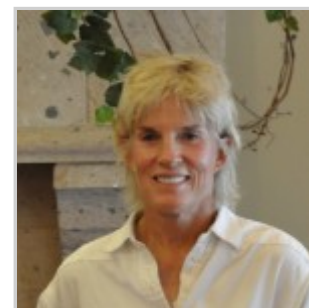
Defending Champion
Kelley Nittoli from
San Antonio, TX



Taffy Brower, 2004 & 2012
Senior Champion from Boynton Beach, FL
2004 Amateur Champion

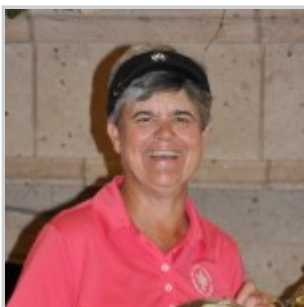


Anna Schultz 2006 & 2007
Senior Champion; 2015
Inaugural Mid-Amateur Finalist



Carolyn Creekmore
2008 Senior Champion
from Dallas, TX

Host State's Top Guns



Pam Spikes of Maumelle knows ever inch of the Arlington Course. Beware the player still swinging like a teen on a known course.

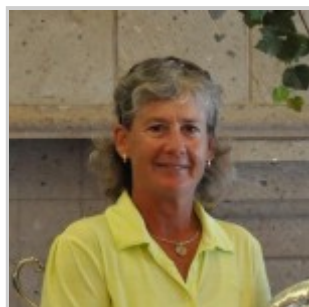


Brenda Carr of Bentonville just conquered the State Match Play and is ready to challenge on Arkansas turf.



Tanna Lee Richard: of Ft. Smith has that Arkansas Golf Hall of Fame by her name for a reason.

Seniors Stars from the Inaugural Mid-Amateur



Gigi Higgins of Cape Coral, FL is the reigning WSGA Mid-Amateur Champion. She hopes to tie a record by capturing two WSGA crowns in a single year.

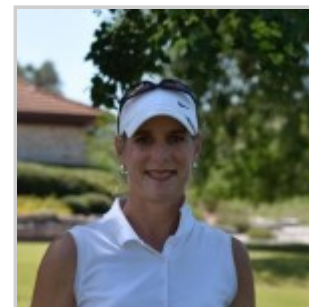


Janice Wilson of Flagler Beach, FL, 2015 Mid Amateur Semi-Finalist, used to play WSGA Tournaments as a break from work. Now retired she is a dangerous threat; because she has time to practice.

Under 60 makes these the Young Guns



Deb Jackson of Johns Creek, GA retired early to play more golf. She captured big silver at her first WSGA Senior in 2014.



Julie Robichaux of Kingwood, TX, a former golf professional, can be easily spotted by her flowing swing.

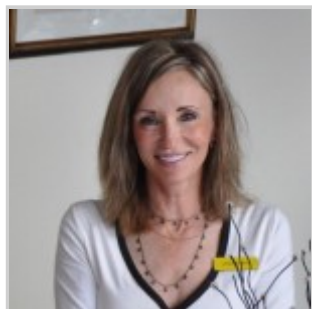


Susan West of Tuscaloosa, Alabama made a name for herself in tennis only to match it in golf. She captured 4th place last year in her first senior WSGA event.

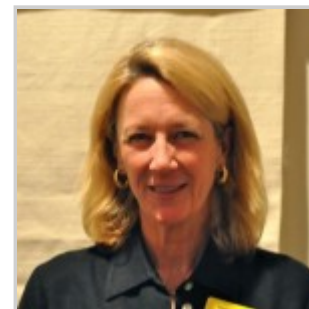


Mimi Hoffman of Springfield, VA was the 2012 Senior Runner-up missing the crown by 2 strokes. Three years older still makes her scary young and ready for a WSGA title.

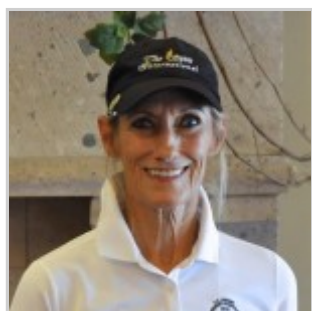
Never Leave these Four Out



Leslie O. Henry of Carrollton, TX has been on more player watches than any senior. With a new hip her tall stately golfer whose swing has stood the test of distance off the tee is scary long. And word on the street is she can get into a scary low putting streak.



Nancy Beck of Dallas, TX.: You never leave out a time. She claims her fame is a simply a long string of Club Championship; but the USGA Women's Senior has multiple player profiles on her for a reason.



Marlene Summers of Montgomery, TX made was the 2014 Senior Runner-up and is alway a threat to methodically conquer a course.



Becky Neal of Mansfield, TX. Becky Neal won the 2014 Texas Senior Open Title and was an alternate qualifier for the 2015 USGA Women's Senior Championship.

SCHEDULE OF EVENTS

Monday, October 19

8:00 AM-2:00 PM Registration
Ladies' Locker Room
Practice Round Competitors obtain Starting Times
6:00 PM Welcome Party–Grandview Room
Cocktails – no host, cash bar
6:30 PM Buffet

Tuesday, October 20

8:30 AM First Round Starting Times

Wednesday, October 21

8:30 AM Second Round Starting Times

Thursday, October 22

9:00 AM Shotgun start - Final Round
Awards Luncheon following completion of play.

Practice Round

To schedule a practice round on October 19, please call the Golf Shop, 501-624-2661, between 8:00 AM and 5:00 PM after September 19th.
Extra practice rounds available for \$60.55.

General Information

Appropriate golf attire **must** be worn. Golf shoes must have soft-spikes.

WSGA reserves the right to use all photographs taken during the tournament on the WSGA website and in press and promotional releases.

The Hot Springs Country Club was established in 1898 as a semi-private club offering membership privileges to the local residents as well as providing golfing opportunities for out-of-town visitors. Nestled in the Ouachita foothills and surrounded by neighboring lakes and national parks, the Hot Springs Country Club continues to operate with those same southern traditions of service. With 36 holes of golf available, the club offers a variety of golfing experiences. The Arlington course was built in 1927 by William Diddle and renovated by two-times Masters Champion Ben Crenshaw with Bent grass greens and restoration of the original classic design. Steep and narrow Bermuda fairways through rolling hills make this course a true challenge for any golfer.

ELIGIBILITY

Entry into the WSGA Senior Championship is open to amateur golfers who are female at birth, have reached their fiftieth birthday by October 20, have a USGA Handicap Index not exceeding 23.5 and who are members of the WSGA through a WSGA member golf club or women's golf organization. Golf clubs or women's golf organizations in the fifteen southern states and the District of Columbia are eligible to join WSGA. All contestants must have a handicap index computed under a USGA Handicap System and must be issued from a "golf club" which is licensed to the USGA Handicap System. Membership must be current as of the entry closing.

A contestant may remit dues for her club.

Please submit \$35 club dues (not refundable) to:

Lecia Alexander, WSGA Treasurer
12334 Meadow Ridge, Stafford, TX 77477
281-240-5485 E-Mail: leciaalex@aol.com

All entries are subject to the approval of both the WSGA Championship Committee and Host Club.

ENTRY PROCEDURE

Entries can be mailed or completed on line at:
www.womens-southerngolfassociation.org.

The entry fee is \$220.00 and includes one practice round and three rounds of golf, all cart fees, practice balls, gratuities and social events.

The fee for WSGA Non-playing Officials is \$70.

Entries close **October 2 at 5 PM CDT**. Contestants who cancel **prior to October 9 at 5 PM CDT** will be refunded the entry fee less a \$25 administrative fee. (Entry fee includes a \$5.00 fee for the WSGA Scholarship Fund.)
No refunds will be given to those who cancel after October 9 at 5 PM CDT.

The field will be limited to 112 players. The low 56 Handicap Index players and ties will be accepted if the application is received by October 2. The remainder of entries will be accepted by order of receipt. If entry applications exceed 112 on October 2, a wait list will be established according to Handicap Index. Entries received after the closing date will be added to the wait list in order of entry receipt. Notification of acceptance or placement on the waiting list will be emailed on October 5. Entries will be accepted after the closing date if the field is not full.

FORMAT

Play will be governed by the USGA Rules of Golf and consists of 54 holes of stroke play.

Flights will be determined by 36 hole score.

Awards will be presented in all flights.

Distance measuring devices are permitted providing the device measures distance only.

TROPHIES

Katherine Graham Senior Trophy will be awarded to the Champion.

The ***Super Senior Trophy*** will be awarded to the contestant who has reached her 70th birthday by October 20 and has the lowest 54 hole gross score.

ACCOMMODATIONS

Arlington Resort Hotel
239 Central Avenue
Hot Springs, Arkansas 71901
501-623-7771

\$89.00 + tax/night

Identify yourself as a Southern Senior Women's Association contestant when making arrangements.

Entry may be duplicated and is available at www.womens-southerngolfassociation.org

For more information, contact:
Susan Hall, Entry Chairman
918-640-3914
WSGAtournaments@gmail.com

OFFICERS

Linda Carter, Interim President
575 Lakeside Avenue, Camden, AR 71701

Beverly Lance, First Vice President
2227 Fox Glen Circle, Birmingham, AL 35216

Mary Edwards, Second Vice President
1300 4th Street, Jonesville, LA 71343

Janie Carpenter, Secretary, President-elect
3225 Laurel Oaks Court, Garland, TX 75044

Lecia Alexander, Treasurer
12334 Meadow Ridge, Stafford, TX 77477

WSGA SENIOR CHAMPIONSHIP COMMITTEE CHAIRS

Tournament	Linda Carter
Entries	Susan Hall
Hospitality	Lynn Hardin
	Tanna Richard
Pairings	Karen Korf
Publicity	Karen Koerner
Registration	Janie Carpenter
Rules/Course Setup	Pat McKamey
	Rose Whatley
Scoreboard	Nannie Ward
Starters	Judy Allardice
Trophy/Prizes	Suzanne Kenkel

HOST CLUB COMMITTEE

General Manager/	Barry Howard
Director of Golf	
Golf Professional	Philip Holley
Course Superintendent	Trey Rutledge
Host Club Chairman	Betty Kate Carney
Executive Chef	Jason Kidd

PAST CHAMPIONS

1986	Nita McMaster	Lakeland	FL
1987	Cecil Maclaurin	Savannah	GA

1988	Marie Winks	Forest	VA
1989	Dede Hoffman	Naples	FL
1990	Dede Hoffman	Naples	FL
1991	Peggy Brass	Orlando	FL
1992	Peggy Brass	Orlando	FL
1993	Peggy Brass	Orlando	FL
1994	Dede Hoffman	Naples	FL
1995	Eleanor Walker	Alpharetta	GA
1996	Eleanor Walker	Alpharetta	GA
1997	Toni Wiesner	Ft. Worth	TX
1998	Harriet Cauthen	Orange Beach	AL
1999	Chris Spivey	Pell City	AL
2000	Patty Moore	Charlotte	NC
2001	Nancy Smith	North Port	FL
2002	Nancy Smith	North Port	FL
2003	Nancy Smith	North Port	FL
2004	Taffy Brower	Boynton Beach	FL
2005	Martha Lang	Mandeville	LA
2006	Anna Schultz	Rockwall	TX
2007	Anna Schultz	Rockwall	TX
2008	Carolyn Creekmore	Dallas	TX
2009	Patty Moore	Charlotte	NC
2010	Mina Hardin	Ft. Worth	TX
2011	Mina Hardin	Ft. Worth	TX
2012	Taffy Brower	Boynton Beach	FL
2013	Mina Hardin	Ft. Worth	TX
2014	Kelley Nittoli	San Antonio	TX

PAST SUPER SENIOR CHAMPIONS

1989	Betty Raasch	Sugar Land	TX
1990	Alice Albert	Baton Rouge	LA
1991	Barbara Russell	Clearwater	FL
1992	Maxine Gilmore	Vienna	WV
1993	Gloria Ellers	Enterprise	AL
1994	Kitty Lee Mann	Osprey	FL
1995	Nancy Rutter	Tequesta	FL
1996	Juanita Petrone	Dublin	VA
1997	Cameron Postle	Slidell	LA
1998	Cameron Postle	Slidell	LA
1999	Juanita Petrone	Dublin	VA
1999	Cameron Postle	Slidell	LA
2000	Mary Lou Scharf	Tulsa	OK
2001	Juanita Petrone	Dublin	VA
2001	Mary Lou Scharf	Tulsa	OK
2002	Mary Lou Scharf	Tulsa	OK
2003	Barbara P. Young	Wilmington	NC
2004	Mary Lou Scharf	Tulsa	OK
2005	Mary Lou Scharf	Tulsa	OK
2006	Beth Curlin	Versailles	KY
2007	Beth Curlin	Versailles	KY
2008	Beth Curlin	Versailles	KY
2009	Diane Dill	Montgomery	TX
2010	Wanda Carroll	Jonesboro	AR
2011	Claudeen Lindberg	Atlanta	GA
2012	Cynthia Curry	Charlotte	NC
2013	Cynthia Curry	Charlotte	NC
2013	Harriet Cauthen	Orange Beach	FL
2014	Harriet Cauthen	Orange Beach	FL

WOMEN'S SOUTHERN GOLF ASSOCIATION

THIRTIETH ANNUAL SENIOR CHAMPIONSHIP



October 20 – October 22, 2015

**Hot Springs Country Club
Arlington Course
101 Country Club Drive
Hot Springs, Arkansas 71901**

www.womens-southerngolfassociation.org