

Womens Southern Golf Association

Organized 1911

[About](#) [Membership](#) [Scholarships](#) [Senior Championship](#) [Amateur Championship](#)

[Mid-Amateur Championship](#) [Archives](#) [Links](#)

2014 Women's Southern Golf Association's Senior Championship

Riverhill Country Club
100 Riverhill Club Ln.
Kerrville, TX 78028

October 6-8, 2014

Practice Round Sunday, October 5

Registration 8:00 am to 2:00 pm October 5, 2014

Registration is closed.

[2014 Registration Form](#) [2014 Entry Brochure](#) [List of Players by Name](#) [List of Players by Handicap Index](#)

[Players to Watch](#)

[2014 Womens Southern Senior Photo Gallery](#)

[**2014 Women's Southern Senior Final Results**](#)



Linda Carter presents the Katherine Graham Trophy to Kelley Nittoli

Kelley Nittoli of San Antonio wins the 29th WSGA Senior Championship

Propelled by a birdie fest on the front nine, Kelley Nittoli of San Antonio carded a front nine 32 at Riverhill Country Club in the final round of the Women's Southern Golf Association's 29th Senior

Championship. Nittoli, then said describing her round; "The back nine got a little ugly with a bogey, bogey start." But, she rallied quickly with a birdie on the 12th hole to post the lowest round of the 54 hole championship tournament a two under 70.

Kelley Nittoli played golf as a child and moved on to collegiate golf at Houston Baptist University, the LPGA Tour, Futures Tour, Asian Tour, and European Tour. She regained her Amateur status in 2008 and recently began playing some amateur competitive golf. She reached the round of 16 in 2012 at the USGA Women's Mid Amateur.

Marlene Summers slept Tuesday night tied for second. Each round brought a lower score. Wednesday her final round 72 gave her a 222 total just one off the winner for the runner-up honors.

Second round leader Tanna Richard managed a 77 in the final round, however it was not enough to match the low rounds of the day. Richard finished third just four strokes off the champion.

Susan West of Tuscaloosa, AL the youngest in the field by a few months managed to gain that fourth place spot with consistent scoring each day.

The Super Senior Division was won by the stellar play of Harriet Cauthen of Orange Beach, AL with a score of 258.

President Linda Carter announced that the venue for the 30th playing of the WSGA Senior will be in Hot Springs, Arkansas at the historic Hot Springs Country Club's Arlington Course. The date is set for Oct. 20-22, 2015. She also welcomed all the senior ladies of the tournament to join in the 100th playing of the WSGA Amateur and Mid-Amateur Championship in Sarasota, Florida at Sara Bay Country Club June 1-5, 2015.



Kelley Nittoli of San Antonio 2014 Champion

Flight Winners



CHAMPIONSHIP FLIGHT WINNERS: 4th Susan West, not pictured 3rd Tanna Richard, Runner-Up Marlene Summers and 2014 Champion Kelley Nittoli.



Deb Jackson of Johns Creek, GA : 1st Flight Winner



FIRST FLIGHT WINNERS : 2nd Nan Dyer, 3rd Jewell Malick (not pictured 4th Leslie O. Henry)



Second Flight : Becky Mitchell 3rd, Ann Webb 1st



Second Flight: Maggie Balch of Mairens, VA: 2nd place (not pictured



Third Flight Winners: Julia McKey 4th,
(not pictured 3rd Whitney Smith)
Winner: Cynthia Curry

Suzanne Kenkel 4th place.



THIRD FLIGHT: Stefanie Smith, 2nd



4th flight: 2nd Carolyn Martin. 1st Mary Edwards



Sally Edmonds 4th Flight



FOURTH FLIGHT:
Hae Han 4th place



FIFTH FLIGHT WINNERS: 4th Charlie Nash, 3rd Molly Tway, 2nd Joyce Oldham & Winner: Ilana Holloway



SIXTH FLIGHT WINNERS: : 4th Gerry McCool, 3rd Diane Wheat, 2nd Lyn Jones, and Winner: Margie Barlow

SUPER SENIOR CHAMPION



SUPER SENIOR CHAMPION: Harriet Cauthen of Orange Beach, AL

[Round 3 Pairings by Name](#) [Round 3 Pairings Schedule](#)

WSGA Senior Championship Publicity Release

Riverhill Country Club
100 Riverhill Club Ln.
Kerrville, TX 78028

October 6-8, 2014
Practice Round Sunday, October 5
Registration 8:00 am to 2:00 pm October 5, 2014

Arkansas steals the lead from Texas

With 69 Texans in the field it was a matter of probability that a Texan would lead after round 1 at the 29th playing of the Women's Southern Golf Association's Senior Championship at Riverhill Country Club. 112 senior women golfers teed it up from 14 of the member states of the WSGA on Monday Oct. 6th. After round one Nancy Kromar of Austin posted the low round of 73 followed by Leslie M. Henry of Houston one stroke back. Tanna Richard from Fort Smith, Arkansas was alone in third place with a 75. Two more Texans tied for 4th, former two-time WSGA Champion, Anna Schultz of Rockwall and Marlene Summers of Montgomery.

Tuesday the story lined changed as scores trickled in the late afternoon. Tanna Richard, a member of the Arkansas Golf Hall of Fame, shot a one over 73 to lead the Championship flight off Wednesday Oct. 8 with a 148 total. Anna Schultz proved why she has held the WSGA Senior title twice by besting her first score by two giving her a total of 150. Marlene Summers matched Schultz's round for a tie for second two strokes behind Richard.

Two rookie seniors who turned fifty this year both rallied to post a two day 151 to tie for fourth going

into the finals. San Antonio claims Kelly Nittoli who matched the low 2nd round score of Richard of 73. Nittoli played professional golf from 1987-1992 and regained her Amateur status in 2008.

Susan West of Tuscaloosa, AL played tennis for the University of Alabama but now has found a passion and a skill for golf. She made the quarterfinals of the US Senior Women's Amateur just last month.

Alone in fifth place with a chance to make a charge on Wednesday in the finals is Karen Northcutt of The Woodlands, TX. Northcutt is one of four lefty players in the field and is trying to confirm a rumor that the course actually favors a lefty. Her consistent scores gave her a 77-76 total of 153.

A separate Super Senior Division has quite a tight race going among the nine players that qualify for the over 70 division. Co-defending Super Senior Champions, Harriet Cauthen of Orange Beach, AL leads with a 172. 2012 Super Senior Champions and Co-Defender, Cynthia Curry of Charlotte, NC, is four back at 176. But, even the Super Senior Division has its own "rookie" to face in Louise Davis of Dallas who is just two strokes behind Cauthen at 174.

Spectators are welcome to come view the action beginning at 8:30 a.m. with a shotgun start for the entire field. The awards ceremony will take place immediately after play with seven flights being awarded four places.

The Champion will have her name engraved on the Katherine Graham Trophy the perpetual trophy of the Senior Championship.

This is the 29th playing of the Senior Championship for the Century old Women's Southern golf organization founded in 1911 in Atlanta Georgia to give the 15 member states of the south and the District of Columbia a place to showcase women's amateur golf. The Senior Championship was formed in 1986 to give a venue for the senior golfers over 50 years of age. It was held in the fall months to offset the Amateur held in May or June.

[Round 2 Pairings by Name](#) [Round 2 Pairing by Schedule](#)

WSGA Senior Championship Publicity Release

Oct. 6th 2014

Riverhill Country Club

Kerrville, Texas

Oct. 6-8, 2014

54 hole stroke play flighted after 36 holes

Yardage: 5,543 Par: 72 Slope: 73.7 Rating: 132

TEXANS SITTING TALL AT THE TOP OF THE SCORING AT THE WSGA SENIOR AT RIVERHILL COUNTRY CLUB IN KERRVILLE.

Nancy Kromar from Austin leads the 1st round scoring at Riverhill Country Club at the WSGA Senior Championship with a one over round of 73. Fourteen of the Southern States were represented on the course at Riverhill Country Club today. With 69 entries from the home state, it was just math that Texans would rise to the top of the leader board.

One back of Nancy Kromar was Leslie M. Henry of Houston, TX. Henry found her passion for golf after 35. Her first competitive love was tennis playing collegiately for LSU. This is Henry's first time to play the WSGA senior event.

Tanna Richard of Ft. Smith, Arkansas shot a stellar 75 to be two off the lead. Richard continues to prove why she was inducted into the Arkansas Golf Hall of Fame.

Marlene Summers of Montgomery, TX and Anna Schultz of Rockwall, TX were tied for 4th with a four over 76.

Tuesday Oct. 7th will be flighting day. The contestants will all be gathered around the scoreboard late in the afternoon to see who makes the Championship flight and has a chance of being crowned the 29th Champion on Wednesday the 8th. Spectators are welcome at Riverhill Country Club to follow some of the best Amateur Seniors golfers of the south. The lower scorers will be in the second wave started around noon Tuesday.

The Super Senior Division is led by defending co-champion Harriet Cauthen of Orange Beach, AL

with 84. Just two strokes behind her with an 86 is Cynthia Curry of Charlotte, NC, the 2012 Super Senior Champion and 2013 S.S. Co-Champion. Louise Davis of Dallas just reached the age of 70 in time to make the Super Senior. Davis was one back of Curry with 87.

The finals on Wednesday will begin with a shot-gun start for the entire 112 field at 8:30 a.m. with awards immediately following play.

This is the 29th playing of the Senior Championship for the Century old Women's Southern golf organization founded in 1911 in Atlanta Georgia to give the 15 member states of the south and the District of Columbia a place to showcase women's amateur golf. The Senior Championship was formed in 1986 to give a venue for the senior golfers over 50 years of age. It was held in the fall months to offset the Amateur held in May or June.

-

[Round One Pairings – Alphabetical](#) [Round One – Handicap Index](#)

WSGA Senior Championship Publicity Release

Sept. 27, 2014

Riverhill Country Club, Kerrville, Texas

Oct. 6-8, 2014

54 hole stroke play flighted after 36 holes

Yardage: 5,543 Par: 72

Slope: 73.7 Rating: 132

ENTRY CLOSES WITH A FULL FIELD FOR 29th WSGA SENIORS CHAMPIONSHIP

Riverhill Country Club and the Women's Southern Golf Association are excited to announce a stellar field of senior golfers awaiting the start of action in the 29th WSGA Senior Championship. Registration and practice rounds will begin October 5th as golfers from 13 of the 15 member states find their way to America's popular vacation spot, the Hill Country of Texas. Action begins Monday Oct. 6th and

finishes with the award of the 29th Champion shortly after noon on Oct. 8th.

Entry Chairman, Susan Hall of Tulsa, OK, had players on the waiting list two weeks before the official entry closed. The entry list reads like a “Who’s Who” list in Amateur Senior golf in the South. Not only are there four former WSGA Senior Champions in the field; but several top amateurs will be playing for the first time since turning 50.

Mina Hardin, of Fort Worth, defending Champion seeking a fourth title just withdrew with injury. This leaves Anna Schultz of Rockwell the 2006 and 2007 Senior Champ as the only former winner in the field for the host state. Schultz was inducted into the Texas Golf Hall of Fame in 2013 and won the US Senior Women’s in 2007.

Taffy Bower of Boynton, Florida will return to try to capture her third title having won in 2004 and 2012. Brower also won the WSGA Amateur title in 2004 making her the only woman to have won both WSGA tournaments the same year.

Martha Lang of Birmingham, Alabama, a former Champion (2005), also has the distinction of winning both the WSGA Amateur and WSGA Senior in her amateur career.

Harriett Cauthen, of Palm Beach, is the co-defending Super Senior Champion (those 70 and over) along with Cynthia Curry of Charlotte, South Carolina.

The “rookies” on the Senior block are led by Susan West of Tuscaloosa, Alabama; Julie Robichaux of Kingwood, Texas; Leslie M. Henry of Houston, Texas; Deb Jackson of Johns Creek, Georgia; Kelley Nittoli of San Antonio, Texas; Becky Neal of Mansfield, Texas and Carol Turnage of Anna, TX.

Susan West will be coming straight to Kerrville from her first U.S.G.A Senior Women’s Amateur Championship where she made the quarterfinals. Robichaux also qualified for the 2014 U.S.G.A Senior Women’s. She and Nittoli played professional golf in the mid 1980’s and have regained their amateur status.

Carol Turnage advanced to the round of 64 at the U.S. Women’s Senior Amateur. She can be recognized as the lefty in the field with the “kid sister” look.

Leslie M. Henry of Houston like Susan West started out as a top ranked tennis player in college and found golf later in life.

Deb Jackson has the entire weight of Georgia on her shoulders as the state's only entry. She volunteers as a golf course rater in Georgia.

Becky Neal, another Texan, played the WSGA Senior in 2013 finishing 5th. Texas has 74 women golfers headed to Kerrville. This is a record number of entries for a single state.

The "seasoned" list of Texans include Jewell Malick who just played in her 5th USGA Senior Amateur in September and advanced to match play bracket in 2013 and Lecia Alexander who just competed in her 6th U.S.G.A. Senior reaching the semifinals in 2012.

Texas has three Henrys in the field. Leslie M. Henry was the "new kid on the block" mentioned earlier and Leslie Olive Henry has been a Senior Medalist in the WSGA Amateur Championship. The third Henry, Diane Henry, calls Riverhill County Club her home course and hopes she will have an advantage playing the Bentgrass greens.

Marlene Summers of Montgomery, Texas, won most improved golfer at her home club for the 2013 season. Reducing a single digit handicap is not that easy when you are competing against 220 other golfers. Summers also won the 2014 Texas Senior Women's Match Play tournament.

Arkansas brings its own experienced player in Tanna Richard. She made the Championship Flight at the 2013 WSGA Amateur and has Arkansas Hall of Fame to her credit. The Arkansas Women's Golf Association has Tanna Richard's name repeated continuously from 2007 to 2014 as "Senior Player of the Year." She was the "Player of the Year" 2007, 2008, 2013 and made the AWGA Hall of Distinction in 2009.

Louisiana rests its hopes on Julie Harrison of Baton Rouge. Harrison is yet another Senior golfer unpacking from a trip to the U.S. Women's Senior Amateur in New Jersey. She reached the quarterfinals in 2012.

The Women's Southern Golf Association added the Senior Championship as a separate fall tournament in 1986. The first tournament had a field of 122 with 27 on the waiting list. Many on the

waiting list made the trip just hoping for a cancellation. Handicaps ranged from 4 to 25 with 13 member states represented. The first Champion, Nita McMasters of Lakeland, FL, was 55 years old. She led the field by 6 strokes. Today, 29 years later, there are 26 players that have handicaps of 4 or less in the field.

The Super Senior Division was added in 1989 to honor the many players 70 years of age still enjoying competitive golf. The oldest in the current field is a player that finished 4th in the 1st flight of the inaugural WSGA Senior Championship. Barbara Young of Montgomery, TX will turn 81 in December. She has a long history with the WSGA as a board member, Past-President and competitor.

The WSGA hosts two events a year; an Amateur Championship in late May or early June and a Senior Championship in September or October. The first Amateur was in 1911 at Eastlake in Atlanta, Georgia. The Amateur will be playing its 100th Amateur Championship at Sara Bay County Club in Sarasota, Florida in June of 2015. Check the WSGA website for the announcement of the inaugural Mid Amateur Division to be played concurrently with the Amateur starting at this 100th Amateur Championship.

The Senior has been held in Texas three times; but never in the Hill Country. In 1990, the organization was very close with a tournament at The Club at Sonterra in San Antonio; 1997 at River Plantation in Conroe and 2009 at Bentwater Yacht and Country Club in Montgomery.

A full field of 112 players, plus non-playing WSGA officials will soon be enjoying the beautiful Hill country of Texas. Spectators are welcome to come and watch some talented senior golfers of the South tackle the design of two legends of golf and golf architecture, Joe Finger and Byron Nelson.

Behind every event stands a local committee preparing a way for the tournament. Lecia Alexander of Stafford, TX, WSGA Tournament Chairman for the event, will be joined by Diane Henry and Sharon Smith, both of Kerrville, to be the host club Tournament Co-Chairmen.

For more information on the WSGA you can explore other parts of this website like the officers section, the scholarship program, the history and archives of past tournaments.



A picture of the Riverhill Country Club as it faces the golf course. Note the three story Gus F. Schreiner home started in 1901. A Texas Historical Commission plaque proclaims this stately home a part of The Hill Country social and ranching history. Byron Nelson and Joe Finger put their name on this parcel of farm land in 1974 as they redesigned a nine hole course into an 18 hole golf course for the future.

Enjoy the uniqueness of the Texas Hill Country on a traditional golf course designed by Golf Legend, Byron Nelson and award winning golf course architect, Joe Finger. See pictures of the three-story clubhouse at www.riverhillcc.com as well as information on this premier private club and its golf course.



Announcing the WSGA 2015 Senior Championship

Hot Springs Country Club: Arlington Course
Hots Springs, Arkansas
October 20-22, 2015
practice round October 19.



Hot Springs Country Club established in 1898 will host the 2015 WSGA Senior Championship on its

famed Arlington Course.

[The Arlington Course](#) noted for steep narrow fairways and undulating greens has challenged players since 1927. The course designed by William Diddle and renovated in 1994 by Ben Crenshaw has been a ranked golf destination among the Ouachita foothills for generations.

[Proudly powered by WordPress](#) | Theme: [Expound](#) by [Konstantin Kovshenin](#)

SCHEDULE OF EVENTS

Sunday, October 5

8:00 AM - 2:00 PM Registration – Breezeway
Practice Round Competitors obtain Starting Times
6:00 PM Welcome Party – Clubhouse
Cocktails – no host, cash/credit card
6:30 PM Buffet

Monday, October 6

8:00 AM First Round Starting Times

Tuesday, October 7

8:00 AM Second Round Starting Times

Wednesday, October 8

8:30 AM Shotgun start - Final Round
Awards Luncheon following completion of play.

Practice Round

To schedule a practice round on October 5, please call the Golf Shop, 830-792-1143, between 8:00 AM and 6:00 PM after September 6th.

Extra practice rounds available for \$56.00.

General Information

Appropriate golf attire **must** be worn. Golf shoes must have soft-spikes.

WSGA reserves the right to use all photographs taken during the tournament on the WSGA website and in press and promotional releases.

Riverhill Country Club is a private club located in Kerrville, Texas, deep in the heart of the Texas Hill Country. The course was designed by Byron Nelson and Joe Finger in 1974. It features beautiful bent grass greens, rolling hills and mature oak trees. Mr. Nelson was quoted as saying "If there is one course I could play for the rest of my life, it would be Riverhill."

ELIGIBILITY

Entry into the WSGA Senior Championship is open to amateur golfers who are female at birth, have reached their fiftieth birthday by October 6, have a USGA Handicap Index not exceeding 23.5 and who are members of the WSGA through a WSGA member golf club or women's golf organization. Golf clubs or women's golf organizations in the fifteen southern states or the District of Columbia are eligible to join WSGA. All contestants must have a handicap index computed under a USGA Handicap System and must be issued from a "golf club" which is licensed to the USGA Handicap System. Membership must be current as of the entry closing.

A contestant may remit dues for her club.

Please submit \$35 club dues (not refundable) to:

Lecia Alexander, WSGA Treasurer
12334 Meadow Ridge, Stafford, TX 77477
281-240-5485 E-mail: leciaalex@aol.com

All entries are subject to the approval of both the WSGA Championship Committee and Host Club.

ENTRY PROCEDURE

Entries can be mailed or completed on line at www.womens-southerngolfassociation.org.

The entry fee is \$250 and includes one practice round and three rounds of golf, all cart fees, practice balls, gratuities and social events.

The fee for WSGA Non-playing Officials is \$60.

Entries close **September 19 at 5 PM CDT**. Contestants who cancel **prior to September 26 at 5 PM CDT** will be refunded the entry fee less a \$25 administrative fee (entry fee includes a \$5.00 fee for WSGA Scholarship Fund)

No refunds will be given to those who cancel after **September 26 at 5 PM CDT**.

The field will be limited to 112 players. The low 56 Handicap Index players and ties will be accepted if the application is received by September 19. The remainder of entries will be accepted by order of receipt. If entry applications exceed 112 on September 19, a wait list will be established according to Handicap Index. Entries received after the closing date will be added to the wait list in order of entry receipt. Notification of acceptance or placement on the waiting list will be emailed on September 22. Entries will be accepted after the closing date if the field is not full.

FORMAT

Play will be governed by the USGA Rules of Golf and consists of 54 holes of stroke play. Flights will be determined by 36 hole score. Awards will be presented in all flights. Distance measuring devices are permitted providing the device measures distance only.

TROPHIES

Katherine Graham Senior Trophy will be awarded to the Champion.

The *Super Senior Trophy* will be awarded to the contestant who has reached her 70th birthday by October 6 and has the lowest 54 hole gross score.

ACCOMMODATIONS

Holiday Inn Express & Suites

2114 Sidney Baker
Kerrville, TX 78028
800-315-2621

\$109.00-\$149.00+tax (standard or suite)

Deadline: September 4, 2014

Group Code – Women's Southern Golf Assoc.

Inn of the Hills Resort & Conference Center

1001 Junction Highway
Kerrville, TX 78028
800-292-5690

\$109.00-\$129.000+tax (single, double, triple or quad) **Deadline: September 4, 2014**

Group Code – WSGA

YO Ranch Hotel & Conference Center

2033 Sidney Baker
Kerrville, TX 78028
830-257-4440

\$99.00-\$109.00+tax (single, double, triple or quad)

Group Code - WSGA

Deadline: September 13, 2014

Reservations must be made by deadlines in order to receive the above rates. Identify yourself as a Women's Southern Golf Association contestant when making arrangements.

Entry may be duplicated and is available at www.womens-southerngolfassociation.org

For more information, contact:

Susan Hall, Entry Chairman, 918-640-3914
WSGATournaments@aol.com

OFFICERS

Linda Carter, President
575 Lakeside Ave., Camden, AR 71701

Audrey Songy, President-elect
69 Town Center Dr., Huntsville, AL 35806

Beverly Lance, First Vice President
2227 Fox Glen Circle, Birmingham, AL 35216

Mary Edwards, Second Vice President
1300 4th St., Jonesville, LA 71343

Janie Carpenter, Secretary
3225 Laurel Oaks Ct., Garland, TX 75044

Lecia Alexander, Treasurer
12334 Meadow Ridge, Stafford, TX 77477

WSGA SENIOR CHAMPIONSHIP COMMITTEE

Tournament Chairmen	Lecia Alexander
Entries	Susan Hall
Hospitality	Ann Viault
Pairings	Karen Korf
Publicity	Karen Koerner
Registration	Janie Carpenter
Rules	Pat McKamey
	Rose Whatley
Rules, Course Setup	Audrey Songy
Scoreboard	Nannie Ward
Starters	Judy Allardice
Trophy/Prizes	Suzanne Kenkel

HOST CLUB COMMITTEE

General Manager	John Junker
Director of Golf	Matt Trevino
Asst. Golf Professional	Raul Smith
Course Superintendent	Nate Atkins
Host Club Chairmen	Diane Henry
	Sharon Smith
Executive Chef	David Price
Publicity Chairman	Carol Swanson

PAST CHAMPIONS

1986	Nita McMaster	Lakeland	FL
1987	Ceil MacLaurin	Savannah	GA
1988	Marie Winks	Forest	VA
1989	Dede Hoffman	Naples	FL
1990	Dede Hoffman	Naples	FL
1991	Peggy Brass	Orlando	FL
1992	Peggy Brass	Orlando	FL
1993	Peggy Brass	Orlando	FL
1994	Dede Hoffman	Naples	FL
1995	Eleanor Walker	Alpharetta	GA
1996	Eleanor Walker	Alpharetta	GA
1997	Toni Wiesner	Ft. Worth	TX
1998	Harriet Cauthen	Orange Beach	AL
1999	Chris Spivey	Pell City	AL
2000	Patty Moore	Charlotte	NC
2001	Nancy Smith	North Port	FL
2002	Nancy Smith	North Port	FL
2003	Nancy Smith	North Port	FL
2004	Taffy Brower	Boynton Beach	FL
2005	Martha Lang	Mandeville	LA
2006	Anna Schultz	Rockwall	TX
2007	Anna Schultz	Rockwall	TX
2008	Carolyn Creekmore	Dallas	TX
2009	Patty Moore	Charlotte	NC
2010	Mina Hardin	Ft. Worth	TX
2011	Mina Hardin	Ft. Worth	TX
2012	Taffy Brower	Boynton Beach	FL
2013	Mina Hardin	Ft. Worth	TX

PAST SUPER SENIOR CHAMPIONS

1989	Betty Raasch	Sugar Land	TX
1990	Alice Albert	Baton Rouge	LA
1991	Barbara Russell	Clearwater	FL
1992	Maxine Gilmore	Vienna	WV
1993	Gloria Ellers	Enterprise	AL
1994	Kitty Lee Mann	Osprey	FL
1995	Nancy Rutter	Tequesta	FL
1996	Juanita Petrone	Dublin	VA
1997	Cameron Postle	Slidell	LA
1998	Cameron Postle	Slidell	LA
1999	Juanita Petrone	Dublin	VA
1999	Cameron Postle	Slidell	LA
2000	Mary Lou Scharf	Tulsa	OK
2001	Juanita Petrone	Dublin	VA
2001	Mary Lou Scharf	Tulsa	OK
2002	Mary Lou Scharf	Tulsa	OK
2003	Barbara P. Young	Wilmington	NC
2004	Mary Lou Scharf	Tulsa	OK
2005	Mary Lou Scharf	Tulsa	OK
2006	Beth Curlin	Versailles	KY
2007	Beth Curlin	Versailles	KY
2008	Beth Curlin	Versailles	KY
2009	Diane Dill	Montgomery	TX
2010	Wanda Carroll	Jonesboro	AR
2011	Claudeen Lindberg	Atlanta	GA
2012	Cynthia Curry	Charlotte	NC
2013	Cynthia Curry	Charlotte	NC
	Harriet Cauthen	Orange Beach	FL

WOMEN'S SOUTHERN GOLF ASSOCIATION

TWENTY-NINTH ANNUAL SENIOR CHAMPIONSHIP



October 6 – October 8, 2014

**Riverhill Country Club
100 Riverhill Club Lane
Kerrville, Texas 78028**

www.womens-southerngolfassociation.org

2014 Women's Southern Amateur Championship

Riverhill Country Club Kerrville, TX

Player Name	City/State	Club	HI
Alexander, Lecia	Stafford, TX	Riverbend CC	2.5
Allardice, Judy	Aiken, SC	Woodside Plantation	12.6
Arnold, Cindy	Oklahoma City, OK	Oklahoma City G&CC	13.3
Balch, Margaret	Mairens, VA	Hermitage CC	6.2
Barlow, Margie	Montgomery, TX	Walden on Lake Conroe	13.2
Beck, Nancy	Dallas, TX	Brook Hollow Golf Club	3.0
Birch, Cynthia	Cypress, TX	Blackhorse Golf Club	9.6
Bousquet, Connie	Mandeville, LA	New Orleans CC	5.1
Boyd, Dorinda	Horseshoe Bay, TX	Horseshoe Bay Resort	9.3
Brower, Taffy	Boynton Beach, FL	Delray Dunes G & CC	1.6
Butler, Soy	Montgomery, TX	Bentwater CC	14.2
Byrne, Dawn	Kingwood, TX	Kingwood CC	11.1
Carpenter, Janie	Garland, TX	Hurricane Creek CC	3.9
Cauthen, Harriet	Orange Beach, AL	Gulf Shores Golf Club	3.9
Clemens, Debbie	Houston, TX	Shadowhawk	9.7
Conravey, Nancy	Abita Springs, LA	Money Hill	14.1
Cowan, Ann	Elk City, OK	Elk City G & CC	5.7
Crumpton, Kay	Cumby, TX	Webb Hill CC	5.8
Curry, Cynthia	Charlotte, NC	Charlotte CC	4.5
Davis, Elaine	Edmond, OK	Lake Hefner GC	12.4
Davis, Louise	Dallas, TX	Vernon's Royal GC	6.9
Dillard, Dianne	Bryan, TX	Briarcrest WGA	13.0
Dukes, Terry Ann	Horseshoe Bay, TX	Horseshoe Bay Resort	4.3
Dyer, Nan	Oklahoma City, OK	Lake Hefner GC	5.1
Edmonds, Sally	Montgomery, TX	Bentwater CC	8.8
Edwards, Mary	Jonesville, LA	LaSalle Golf & CC	13.1
Elkins, Ginny	Porter, TX	Kingwood CC	18.7
Evers, Linda	Nashville, TN	Belle Meade CC	6.7
Gavin, Nancy	Jacksons Gap, AL	Moore's Mill Golf Club	3.9
Ghio, Betty	Houston, TX	BraeBurn Country Club	5.2

2014 Women's Southern Amateur Championship

Riverhill Country Club Kerrville, TX

Player Name	City/State	Club	HI
Gilkeson, Cindy	Sugarland, TX	Riverbend CC	3.5
Greene, Lynne	Greenville, TX	Webb Hill CC	12.5
Hagan, Donna	Montgomery, TX	Bentwater CC	18.5
Hall, Susan	Tulsa, OK	Page Belcher	15.6
Han, Hae	Bethesda, MD	Montgomery Country Club	9.8
Harrison, Julie	Baton Rouge, LA	Country Club of Louisiana	3.1
Henigan, Diana	Montgomery, TX	Bentwater CC	8.8
Henry, Diane	Kerrville, TX	Riverhill CC	3.3
Henry, Leslie	Houston, TX	Memorial Park Golf Club	3.0
Henry, Leslie O.	Carrollton, TX	Brookhaven CC	1.6
Hite, Louise	Kingwood, TX	Kingwood CC	23.1
Holloway, Ilana	Kerrville, TX	Riverhill CC	12.3
Houston, Linda	Gulf Shores, AL	Craft Farms-Honours Golf	20.4
Jackman, Linda	Montgomery, TX	Walden on Lake Conroe	11.5
Jackson, Deb	Johns Creek, GA	Rivermont Golf Club	2.9
Johnson, Chris	Houston, TX	Riverbend CC	7.0
Jones, Lynn	Houston, TX	BraeBurn Country Club	13.2
Kenkel, Suzanne	Irving, TX	The Sports Club at Four Seasons	4.0
Kimball, Rita	Montgomery, TX	Bentwater CC	18.0
Kinnett, Karen	Shepherdstown, WV	The Club at Cress Creek	5.2
Kirchner, Suzette	Spring, TX	Blackhorse Golf Club	5.7
Koerner, Karen	Montgomery, TX	Bentwater CC	17.6
Kramer, Patti	Houston, TX	Kingwood CC	14.0
Kromar, Nancy	Austin, TX	Morris Williams Golf Assn.	3.2
Lang, Martha	Birmingham, AL	Shoal Creek	2.7
Longaker, Bonnie	Sugarland, TX	Riverbend CC	12.7
Malick, Jewell	Rockwall, TX	The Honors GC	0.5
Martin, Carolyn	Stillwater, OK	Lakeside Golf Course	12.6
Masoner, Becky	Sand Springs, OK	Page Belcher	13.5
McCartan, Luan	Plano, TX	Gleneagles	3.6

2014 Women's Southern Amateur Championship

Riverhill Country Club Kerrville, TX

Player Name	City/State	Club	HI
McCool, Gerry	Abita Springs, LA	Money Hill	22.4
McGehee, Margaret	Richmond, VA	Country Club of Virginia	9.9
McKey, Julia	Slaughter, LA	Westdale LGA	10.5
Meyer, Donna Kay	Nassau Bay, TX	Canongate South	6.2
Mitchell, Becky	Conroe, TX	River Plantation CC	5.3
Moore, Mary	Bossier City, LA	Fox Run	21.2
Morris, Lydia	Montgomery, TX	Bentwater CC	8.4
Nagle, Jan	Meeker, OK	Shawnee Elks	17.8
Nash, Charlie	Jacksonville, AR	Rebsamen Golf Course	16.0
Neal, Becky	Mansfield, TX	Walnut Creek CC	1.4
Nelson, Deborah	Montgomery, TX	Walden on Lake Conroe	17.0
Nittoli, Kelley	San Antonio, TX	San Antonio CC	0.7
Northcutt, Karen	The Woodlands, TX	The Woodlands CC	5.1
Oldham, Joyce	Bryan, TX	Traditions Golf Club	14.5
Oppenheimer, Liz	Bellaire, TX	Riverbend CC	11.8
Payne, Mary	Charleston, WV	Berry Hills CC	10.4
Pazara, Carolyn	Arlington, TX	Walnut Creek CC	4.0
Perilloux, Lynn	Kerrville, TX	Riverhill CC	16.4
Pickens, Nita	Huntsville, TX	Elkins Lake CC	14.1
Proctor, Bobbie	Montgomery, TX	Bentwater CC	15.6
Rabuck, Shirley	Montgomery, TX	Bentwater CC	12.8
Ratcliffe, Carole	Ft. Lauderdale, FL	Coral Ridge CC	8.3
Rich, Cherie	Oklahoma City, OK	Lake Hefner GC	13.0
Richard, Tanna	Ft. Smith, AR	Hardscrabble CC	0.0
Rizzo, Jill	College Station, TX	Traditions Golf Club	14.8
Robichaux, Julie	Kingwood, TX	Kingwood CC	3.2
Sackett, Linda	Boerne, TX	Silverhorn Golf Club	10.2
Schultz, Anna	Rockwall, TX	The Honors GC	+0.9
Shane, June	Montgomery, TX	Bentwater CC	17.8
Smith, Kathlyn	Tulsa, OK	Page Belcher	16.5

2014 Women's Southern Amateur Championship

Riverhill Country Club Kerrville, TX

Player Name	City/State	Club	HI
Smith, Stefanie	Dallas, TX	Bent Tree CC	4.5
Smith, Whitney	San Antonio, TX	San Antonio CC	6.8
Stuart, Mary Lynn	Shreveport, LA	East Ridge CC	5.3
Summers, Marlene	Montgomery , TX	Bentwater CC	0.8
Tanner, Judy	Huntsville, TX	Elkins Lake CC	10.8
Turnage, Carol	Anna, TX	Stonebridge Ranch CC	2.5
Turner, Jennifer	Porter, TX	Kingwood CC	9.5
Tway, Molly	San Antonio, TX	Oak Hills CC	12.7
Venner, Anita	Monrovia, MD	MSGA Eclub	4.9
Webb, Ann	Austin, TX	Morris Williams Golf Assn.	6.6
West, Susan	Tuscaloosa, AL	North River Yacht Club	+0.3
Whatley, Rose	Ardmore, OK	Dornick Hills CC	21.7
Wheat, Diane	Oklahoma City, OK	The Greens CC	13.5
Wheelis, Nannette	Waco, TX	Ridgewood CC	7.1
White, Becky	Kerrville, TX	Riverhill CC	14.6
Wilson, Sharon	Fayetteville, AR	Fayetteville CC	12.4
Wolf, Debbie	Diamondhead, MS	Diamondhead CC	4.5
Wolf, Dolly	Tyler, TX	Willow Brook CC	12.9
Wood, Cheryl	Kerrville, TX	Comanche Trace	10.2
Young, Barbara	Montgomery, TX	Bentwater CC	19.6
Zeiders, LaDonna	Edmond, OK	River Oaks GC	16.0

2014 Women's Southern Amateur Championship

Riverhill Country Club Kerrville, TX

Player Name	City/State	Club	HI
Schultz, Anna	Rockwall, TX	The Honors GC	+0.9
West, Susan	Tuscaloosa, AL	North River Yacht Club	+0.3
Richard, Tanna	Ft. Smith, AR	Hardscrabble CC	0.0
Malick, Jewell	Rockwall, TX	The Honors GC	0.5
Nittoli, Kelley	San Antonio, TX	San Antonio CC	0.7
Summers, Marlene	Montgomery , TX	Bentwater CC	0.8
Neal, Becky	Mansfield, TX	Walnut Creek CC	1.4
Henry, Leslie O.	Carrollton, TX	Brookhaven CC	1.6
Brower, Taffy	Boynton Beach, FL	Delray Dunes G & CC	1.6
Alexander, Lecia	Stafford, TX	Riverbend CC	2.5
Turnage, Carol	Anna, TX	Stonebridge Ranch CC	2.5
Lang, Martha	Birmingham, AL	Shoal Creek	2.7
Jackson, Deb	Johns Creek, GA	Rivermont Golf Club	2.9
Beck, Nancy	Dallas, TX	Brook Hollow Golf Club	3.0
Henry, Leslie	Houston, TX	Memorial Park Golf Club	3.0
Harrison, Julie	Baton Rouge, LA	Country Club of Louisiana	3.1
Robichaux, Julie	Kingwood, TX	Kingwood CC	3.2
Kromar, Nancy	Austin, TX	Morris Williams Golf Assn.	3.2
Henry, Diane	Kerrville, TX	Riverhill CC	3.3
Gilkeson, Cindy	Sugarland, TX	Riverbend CC	3.5
McCartan, Luan	Plano, TX	Gleneagles	3.6
Carpenter, Janie	Garland, TX	Hurricane Creek CC	3.9
Cauthen, Harriet	Orange Beach, AL	Gulf Shores Golf Club	3.9
Gavin, Nancy	Jacksons Gap, AL	Moore's Mill Golf Club	3.9
Pazara, Carolyn	Arlington, TX	Walnut Creek CC	4.0
Kenkel, Suzanne	Irving, TX	The Sports Club at Four Seasons	4.0
Dukes, Terry Ann	Horseshoe Bay, TX	Horseshoe Bay Resort	4.3
Curry, Cynthia	Charlotte, NC	Charlotte CC	4.5
Smith, Stefanie	Dallas, TX	Bent Tree CC	4.5
Wolf, Debbie	Diamondhead, MS	Diamondhead CC	4.5
Venner, Anita	Monrovia, MD	MSG A Eclub	4.9
Dyer, Nan	Oklahoma City, OK	Lake Hefner GC	5.1

2014 Women's Southern Amateur Championship

Riverhill Country Club Kerrville, TX

Player Name	City/State	Club	HI
Bousquet, Connie	Mandeville, LA	New Orleans CC	5.1
Northcutt, Karen	The Woodlands, TX	The Woodlands CC	5.1
Kinnett, Karen	Shepherdstown, WV	The Club at Cress Creek	5.2
Ghio, Betty	Houston, TX	BraeBurn Country Club	5.2
Stuart, Mary Lynn	Shreveport, LA	East Ridge CC	5.3
Mitchell, Becky	Conroe, TX	River Plantation CC	5.3
Cowan, Ann	Elk City, OK	Elk City G & CC	5.7
Kirchner, Suzzette	Spring, TX	Blackhorse Golf Club	5.7
Crumpton, Kay	Cumby, TX	Webb Hill CC	5.8
Balch, Margaret	Mairens, VA	Hermitage CC	6.2
Meyer, Donna Kay	Nassau Bay, TX	Canongate South	6.2
Webb, Ann	Austin, TX	Morris Williams Golf Assn.	6.6
Evers, Linda	Nashville, TN	Belle Meade CC	6.7
Smith, Whitney	San Antonio, TX	San Antonio CC	6.8
Davis, Louise	Dallas, TX	Vernon's Royal GC	6.9
Johnson, Chris	Houston, TX	Riverbend CC	7.0
Wheelis, Nannette	Waco, TX	Ridgewood CC	7.1
Ratcliffe, Carole	Ft. Lauderdale, FL	Coral Ridge CC	8.3
Morris, Lydia	Montgomery, TX	Bentwater CC	8.4
Henigan, Diana	Montgomery, TX	Bentwater CC	8.8
Edmonds, Sally	Montgomery, TX	Bentwater CC	8.8
Boyd, Dorinda	Horseshoe Bay, TX	Horseshoe Bay Resort	9.3
Turner, Jennifer	Porter, TX	Kingwood CC	9.5
Birch, Cynthia	Cypress, TX	Blackhorse Golf Club	9.6
Clemens, Debbie	Houston, TX	Shadowhawk	9.7
Han, Hae	Bethesda, MD	Montgomery Country Club	9.8
McGehee, Margaret	Richmond, VA	Country Club of Virginia	9.9
Sackett, Linda	Boerne, TX	Silverhorn Golf Club	10.2
Wood, Cheryl	Kerrville, TX	Comanche Trace	10.2
Payne, Mary	Charleston, WV	Berry Hills CC	10.4
McKey, Julia	Slaughter, LA	Westdale LGA	10.5
Tanner, Judy	Huntsville, TX	Elkins Lake CC	10.8

2014 Women's Southern Amateur Championship

Riverhill Country Club Kerrville, TX

Player Name	City/State	Club	HI
Byrne, Dawn	Kingwood, TX	Kingwood CC	11.1
Jackman, Linda	Montgomery, TX	Walden on Lake Conroe	11.5
Oppenheimer, Liz	Bellaire, TX	Riverbend CC	11.8
Holloway, Ilana	Kerrville, TX	Riverhill CC	12.3
Davis, Elaine	Edmond, OK	Lake Hefner GC	12.4
Wilson, Sharon	Fayetteville, AR	Fayetteville CC	12.4
Greene, Lynne	Greenville, TX	Webb Hill CC	12.5
Allardice, Judy	Aiken, SC	Woodside Plantation	12.6
Martin, Carolyn	Stillwater, OK	Lakeside Golf Course	12.6
Tway, Molly	San Antonio, TX	Oak Hills CC	12.7
Longaker, Bonnie	Sugarland, TX	Riverbend CC	12.7
Rabuck, Shirley	Montgomery, TX	Bentwater CC	12.8
Wolf, Dolly	Tyler, TX	Willow Brook CC	12.9
Rich, Cherie	Oklahoma City, OK	Lake Hefner GC	13.0
Dillard, Dianne	Bryan, TX	Briarcrest WGA	13.0
Edwards, Mary	Jonesville, LA	LaSalle Golf & CC	13.1
Barlow, Margie	Montgomery, TX	Walden on Lake Conroe	13.2
Jones, Lynn	Houston, TX	BraeBurn Country Club	13.2
Arnold, Cindy	Oklahoma City, OK	Oklahoma City G&CC	13.3
Wheat, Diane	Oklahoma City, OK	The Greens CC	13.5
Masoner, Becky	Sand Springs, OK	Page Belcher	13.5
Kramer, Patti	Houston, TX	Kingwood CC	14.0
Conravey, Nancy	Abita Springs, LA	Money Hill	14.1
Pickens, Nita	Huntsville, TX	Elkins Lake CC	14.1
Butler, Soy	Montgomery, TX	Bentwater CC	14.2
Oldham, Joyce	Bryan, TX	Traditions Golf Club	14.5
White, Becky	Kerrville, TX	Riverhill CC	14.6
Rizzo, Jill	College Station, TX	Traditions Golf Club	14.8
Hall, Susan	Tulsa, OK	Page Belcher	15.6
Proctor, Bobbie	Montgomery, TX	Bentwater CC	15.6
Zeiders, LaDonna	Edmond, OK	River Oaks GC	16.0
Nash, Charlie	Jacksonville, AR	Rebsamen Golf Course	16.0

2014 Women's Southern Amateur Championship

Riverhill Country Club Kerrville, TX

Player Name	City/State	Club	HI
Perilloux, Lynn	Kerrville, TX	Riverhill CC	16.4
Smith, Kathlyn	Tulsa, OK	Page Belcher	16.5
Nelson, Deborah	Montgomery, TX	Walden on Lake Conroe	17.0
Koerner, Karen	Montgomery, TX	Bentwater CC	17.6
Shane, June	Montgomery, TX	Bentwater CC	17.8
Nagle, Jan	Meeker, OK	Shawnee Elks	17.8
Kimball, Rita	Montgomery, TX	Bentwater CC	18.0
Hagan, Donna	Montgomery, TX	Bentwater CC	18.5
Elkins, Ginny	Porter, TX	Kingwood CC	18.7
Young, Barbara	Montgomery, TX	Bentwater CC	19.6
Houston, Linda	Gulf Shores, AL	Craft Farms-Honours Golf	20.4
Moore, Mary	Bossier City, LA	Fox Run	21.2
Whatley, Rose	Ardmore, OK	Dornick Hills CC	21.7
McCool, Gerry	Abita Springs, LA	Money Hill	22.4
Hite, Louise	Kingwood, TX	Kingwood CC	23.1

Womens Southern Golf Association

Organized 1911

[About](#) [Membership](#) [Scholarships](#) [Senior Championship](#) [Amateur Championship](#)

[Mid-Amateur Championship](#) [Archives](#) [Links](#)

2014 Players to Watch

Super Seniors



These two, Cynthia Curry of Charlotte and Harriet Cauthen spent the year sharing the Super Senior trophy six months at a time. They have plans to keep it and get an entire year out of the honor..



Defending Champion Mina Hardin has carried that trophy home three times already. A fourth will tie a record.



Susan West is finally old enough to play a senior tournament. She is fresh from validation of her game at the U.S. Senior Women's Championship where she reached the quarterfinals.



These partners were winners together in 2013; but will be opponents facing each other on the slopes of Riverhill C.C. Julie Robichaux of Kingwood . TX in the red and Diane Henry of Kerrville,



Julie Harrison of Baton Rouge is at last

TX in pink

old enough to leave the college kids behind. They are happy as she has sent many back to golf school in match play.



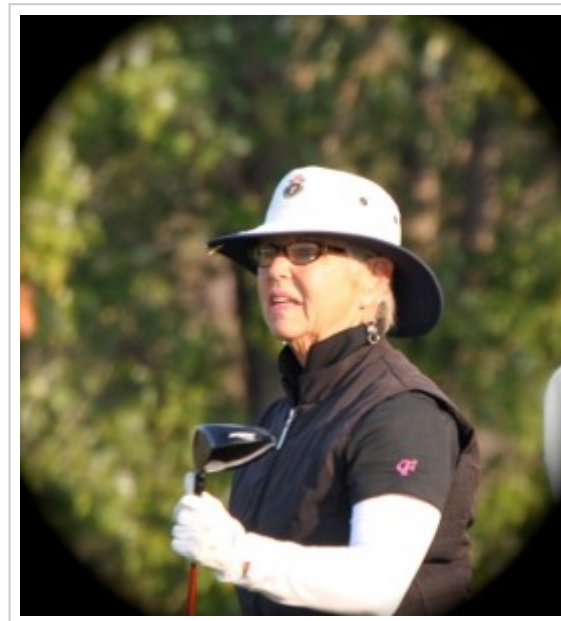
Carolyn Pazara of Aarlington, TX plays regularly with the low handicap players of North Texas . The star studded field will just be another walk in a park for this Senior



You may wonder what Jewell Malick of Rockwall, TX is doing in this picture. Hint, it requires Math....she is working her pin placement sheet. Beware the player who know where the holes are.



Lecia Alexander of Stafford, TX has a way of finishing in the silver. Do not count this fighter out of any championship.



Leslie O. Henry is the Henry famous for her eagle in the 2011 Senior on the finishing hole.



Nancy Beck of Dallas, TX claims her fame is only a string of Club Championships. But, this tall Texan can play and hold her own against any age or level golfer.

Taffy Brower of Boynton, FL 2004 and 2012 Senior Champion, is back ready to face the uneven lies found only outside her State .



Kelley Nittoli of San Antonio is just getting back into amateur golf after being reinstated as an amateur in 2008..



Deb Jackson of Johns Creek, GA is newly retired and ready to make golf tournaments a vocation for 50 years.



Martha Lang of Birmingham, AL may be hyped and ready for another senior victory after coaching the best three amateurs in the nation at the Women's World Cup in Japan.



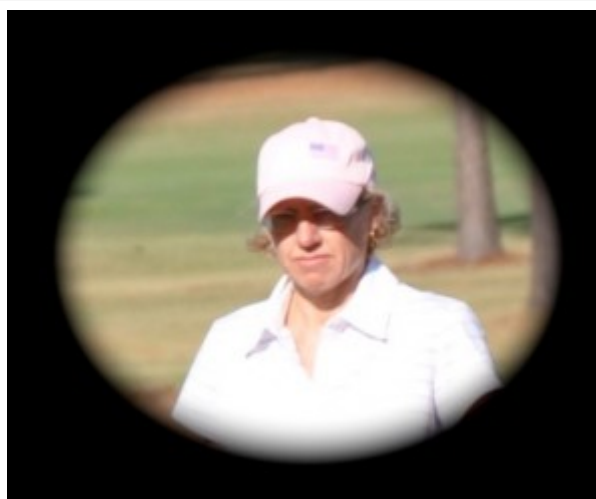
Tanna Richard of Ft. Smith, Arkansas has "Hall of Fame" by her name for a reason.



Anna Schultz of Rockwall, TX 2006 and 2007 Senior Champion, is ready for a third victory.



Carol Turnage of Anna, TX , a regular at the WSGA Amateur events, now throws her hat in to the WSGA Senior



Nancy Kromar of Austin, TX is just a short drive from Kerrville. Travel will be a breeze compared to her last

ring. This petite lefty golfer also qualified for the 2014 U.S. Women's Senior.

tournament which was in New Jersey. She made the cut at the U.S. Senior Women's Amateur.

Proudly powered by WordPress | Theme: Expound by Konstantin Kovshenin

Womens Southern Golf Association

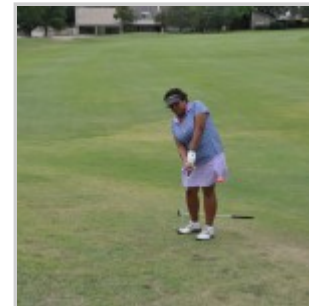
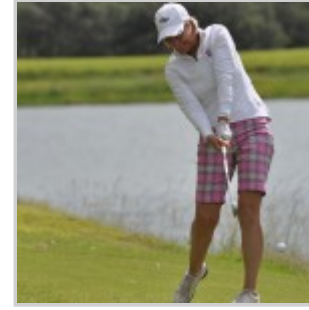
Organized 1911

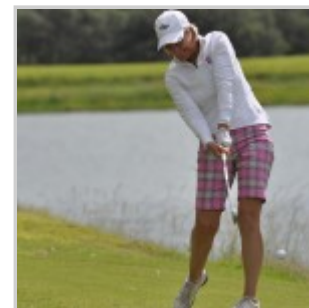
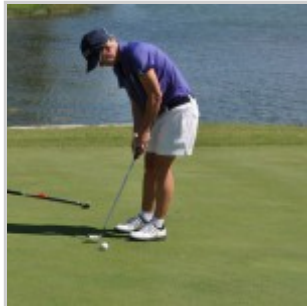
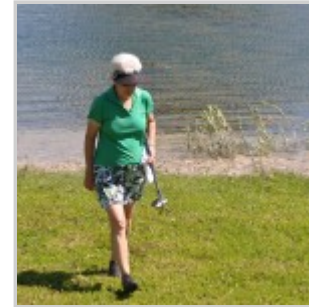
[About](#) [Membership](#) [Scholarships](#) [Senior Championship](#) [Amateur Championship](#)

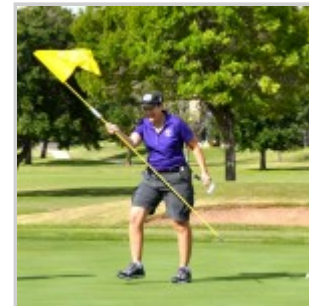
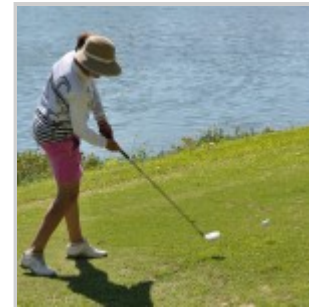
[Mid-Amateur Championship](#) [Archives](#) [Links](#)

2014 WSGA Senior Championship Photo Gallery

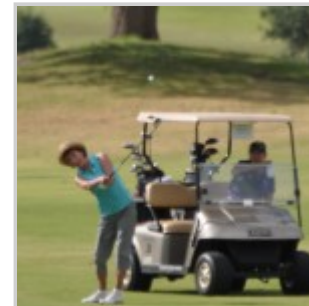
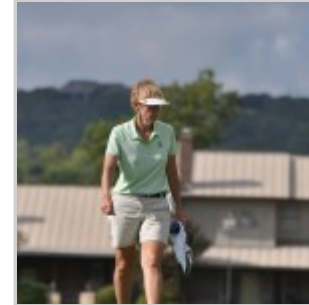
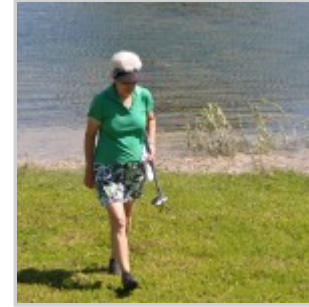


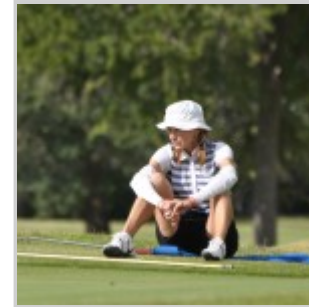
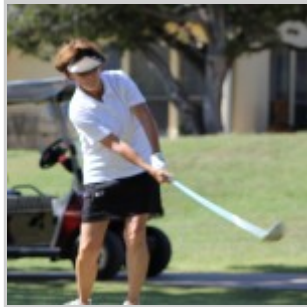
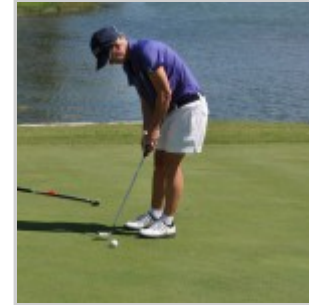


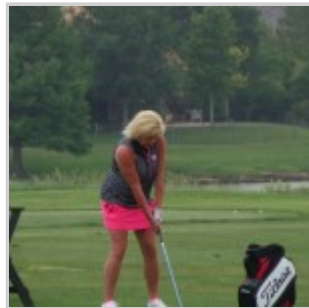
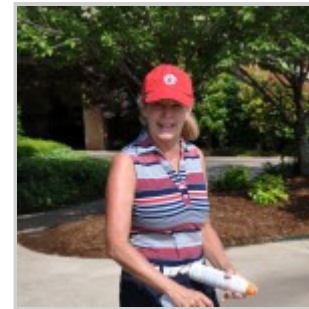
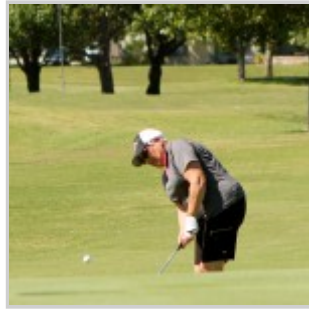




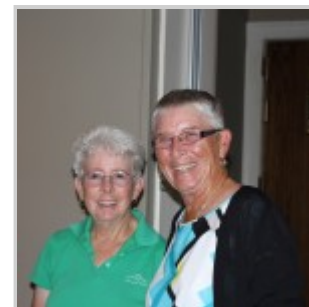
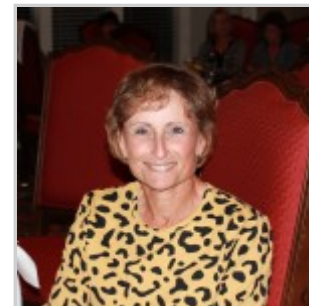


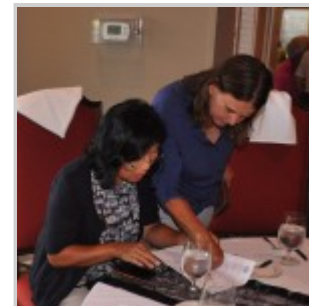
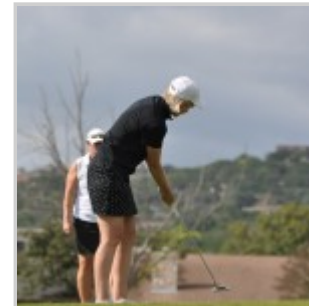


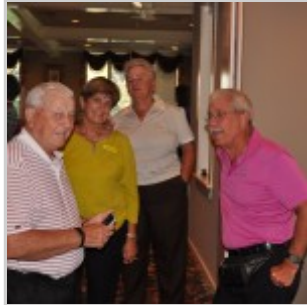












[Proudly powered by WordPress](#) | Theme: [Expound](#) by [Konstantin Kovshenin](#)

2014 Women's Southern Senior Championship

Riverhill Country Club - (2)

Championship Flight

Kelley Nittoli, San Antonio, Texas - 78-73-70--221
Marlene Summers, Montgomery, Texas - 76-74-72--222
Tanna Richard, Ft. Smith, Ark. - 75-73-77--225
Susan West, Tuscaloosa, Ala. - 77-74-76--227
Anna Schultz, Rockwall, Texas - 76-74-79--229
Carol Turnage, Anna, Texas - 78-77-78--233
Becky Neal, Mansfield, Texas - 84-77-73--234
Martha Lang, Birmingham, Ala. - 77-80-77--234
Karen Northcutt, The Woodlands, Texas - 77-76-81--234
Leslie Henry, Houston, Texas - 74-80-81--235
Lecia Alexander, Stafford, Texas - 79-79-78--236
Nancy Kromar, Austin, Texas - 73-82-85--240
Taffy Brower, Boynton Beach, Fla. - 78-77-88--243
Nancy Beck, Dallas, Texas - 78-79-86--243
Karen Kinnett, Shepherdstown, W.Va. - 77-84-82--243

First Flight

Deb Jackson, Johns Creek, Ga. - 79-83-76--238
Nan Dyer, Oklahoma City, Okla. - 81-81-81--243
Jewell Malick, Rockwall, Texas - 83-79-82--244
Leslie O. Henry, Carrollton, Texas - 82-82-80--244
Janie Carpenter, Garland, Texas - 82-82-80--244
Mary Lynn Stuart, Shreveport, La. - 83-81-80--244
Julie Harrison, Baton Rouge, La. - 83-82-80--245
Terry Ann Dukes, Horseshoe Bay, Texas - 85-78-83--246
Anita Venner, Monrovia, Md. - 85-79-83--247
Ann Cowan, Elk City, Okla. - 85-78-84--247
Diane Henry, Kerrville, Texas - 87-78-84--249
Nancy Gavin, Jacksons Gap, Ala. - 83-80-87--250
Julie Robichaux, Kingwood, Texas - 84-80-86--250
Cindy Gilkeson, Sugarland, Texas - 84-82-85--251
Luan McCartan, Plano, Texas - 81-83-87--251

Second Flight

Ann Webb, Austin, Texas - 83-88-79--250
Margaret Balch, Mairiens, Va. - 84-85-82--251
Becky Mitchell, Conroe, Texas - 81-89-84--254
Suzanne Kenkel, Irving, Texas - 84-88-83--255
Chris Johnson, Houston, Texas - 85-88-83--256
Donna Kay Meyer, Nassau Bay, Texas - 82-87-87--256
Connie Bousquet, Mandeville, La. - 80-89-87--256
Linda Evers, Nashville, Tenn. - 83-87-87--257
Carolyn Pazara, Arlington, Texas - 87-85-85--257
Harriet Cauthen, Orange Beach, Ala. - 84-88-86--258
Louise Davis, Dallas, Texas - 87-87-88--262
Mary Payne, Charleston, W.Va. - 85-85-92--262
Jennifer Turner, Porter, Texas - 85-89-90--264

Dawn Byrne, Kingwood, Texas - 87-88-96--271
Linda Jackman, Montgomery, Texas - 83-88-NC--NC

Third Flight

Cynthia Curry, Charlotte, N.C. - 87-89-86--262
Stefanie Smith, Dallas, Texas - 91-88-83--262
Whitney Smith, San Antonio, Texas - 89-87-87--263
Julia McKey, Slaughter, La. - 91-90-86--267
Kay Crumpton, Cumby, Texas - 90-88-89--267
Diana Henigan, Montgomery, Texas - 93-86-88--267
Dorinda Boyd, Horseshoe Bay, Texas - 91-87-90--268
Debbie Wolf, Diamondhead, Miss. - 85-95-89--269
Betty Ghio, Houston, Texas - 88-90-91--269
Carole Ratcliffe, Ft. Lauderdale, Fla. - 90-86-94--270
Shirley Rabuck, Montgomery, Texas - 86-90-94--270
Judy Tanner, Huntsville, Texas - 91-89-92--272
Suzzette Kirchner, Spring, Texas - 83-96-93--272
Margaret McGehee, Richmond, Va. - 87-95-91--273
Sharon Wilson, Fayetteville, Ark. - 91-90-94--275
Cynthia Birch, Cypress, Texas - 92-90-NC--NC

Fourth Flight

Mary Edwards, Jonesville, La. - 90-96-84--270
Carolyn Martin, Stillwater, Okla. - 93-92-86--271
Sally Edmonds, Montgomery, Texas - 94-95-87--276
Hae Han, Bethesda, Md. - 91-92-94--277
Judy Allardice, Aiken, S.C. - 91-92-94--277
Bonnie Longaker, Sugarland, Texas - 94-94-90--278
Lydia Morris, Montgomery, Texas - 97-94-88--279
Nannette Wheelis, Waco, Texas - 90-94-95--279
Liz Oppenheimer, Bellaire, Texas - 90-100-91--281
Cheryl Wood, Kerrville, Texas - 92-95-95--282
Linda Sackett, Boerne, Texas - 92-94-96--282
Elaine Davis, Edmond, Okla. - 94-93-96--283
Cherie Rich, Oklahoma City, Okla. - 98-93-92--283
Soy Butler, Montgomery, Texas - 98-93-93--284
June Shane, Montgomery, Texas - 92-95-99--286
Cindy Arnold, Oklahoma City, Okla. - 95-95-97--287
Ginny Elkins, Porter, Texas - 92-99-101--292

Fifth Flight

Ilana Holloway, Kerrville, Texas - 100-95-86--281
Joyce Oldham, Bryan, Texas - 97-96-90--283
Molly Tway, San Antonio, Texas - 91-102-94--287
Rose Whatley, Ardmore, Okla. - 96-98-94--288
Charlie Nash, Jacksonville, Ark. - 100-97-91--288
Bobbie Proctor, Montgomery, Texas - 95-101-92--288
Lynne Greene, Greenville, Texas - 96-96-96--288
Becky Masoner, Sand Springs, Okla. - 99-98-93--290
Dianne Dillard, Bryan, Texas - 97-96-100--293
Nancy Conravey, Abita Springs, La. - 94-102-98--294
Patti Kramer, Houston, Texas - 93-100-101--294
Becky White, Kerrville, Texas - 100-99-97--296
Kathlyn Smith, Tulsa, Okla. - 104-94-98--296

Dolly Wolf, Tyler, Texas - 100-96-101--297
Jill Rizzo, College Station, Texas - 102-97-99--298
Deborah Nelson, Montgomery, Texas - 102-95-104--301
Karen Koerner, Montgomery, Texas - 97-102-DQ--DQ

Sixth Flight

Margie Barlow, Montgomery, Texas - 102-101-94--297
Lyn Jones, Houston, Texas - 102-104-96--302
Diane Wheat, Oklahoma City, Okla. - 104-99-99--302
Gerry McCool, Abita Springs, La. - 100-100-102--302
Susan Hall, Tulsa, Okla. - 103-102-99--304
Barbara Young, Montgomery, Texas - 101-101-103--305
Louise Hite, Kingwood, Texas - 100-103-104--307
Nita Pickens, Huntsville, Texas - 96-109-103--308
Lynn Perilloux, Kerrville, Texas - 101-102-105--308
Donna Hagan, Montgomery, Texas - 100-104-104--308
LaDonna Zeiders, Edmond, Okla. - 107-103-100--310
Mary Moore, Bossier City, La. - 106-102-109--317
Linda Houston, Gulf Shores, Ala. - 109-104-107--320
Jan Nagle, Meeker, Okla. - 121-106-119--346

#