

# Womens Southern Golf Association

Organized 1911

[About](#) [Membership](#) [Scholarships](#) [Senior Championship](#) [Amateur Championship](#)

[Mid-Amateur Championship](#) [Archives](#) [Links](#)

## Women's Southern Golf Association

2013 Senior Championship



2013 Senior Championship Winner, Mina Hardin



2013 Super Senior Co-Champions



Cynthia Curry and Harriet Cauthon  
2013 Super Senior Co-Champions

## Championship Flight Winners



Brenda Pictor Marietta, GA  
Runner Up



Lecia Alexander Stafford, TX  
Third Place



Carolyn Creekmore Dallas, TX  
Fourth Place

## Flight Winner Gallery



First Flight (l-r) Taffy Brower (1st),  
Tanna Richard (2nd), Deborah  
Williams (3rd), Meg Giusti-not  
pictured (4th)



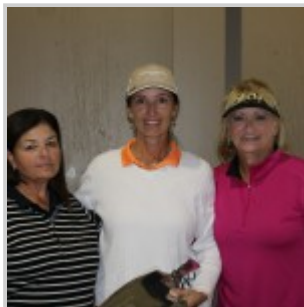
Second Flight (l-r) Elsa Foley  
(3rd), Connie Bousquet (2nd)  
Evelyn Byrd Blackmon (1st)  
Rebecca Huber-not pictured (4th)



Third Flight (l-r) Bonnie Wood  
(1st), Melanie Smith (2nd),  
Carole Ratcliffe (3rd) Rochelle  
Weaver (4th)



Fourth Flight (l-r) Lisa Graham (1st), Barbara Brown (2nd), Cherie Rich (3rd), Wanda Hutto (4th)



Fifth Flight (l-r) Cathy Campbell (3rd) Susan Dwyer (2nd), Debbie Magee (1st)

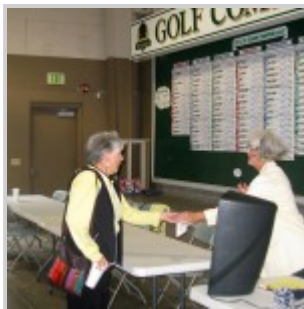


Sixth Flight (l-r) Dianne Wheat (4th), Linda Rose Whatley (2nd), Gerry McCool (1st) Linda Houston-not pictured (3rd)

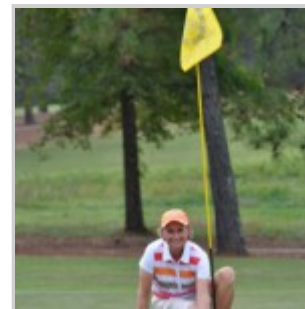
### 4 Eagles Fly Over Ol'Colony



Mina Hardin & Anita Venner. Both eagled the par 5, number 7. Venner eagled in the 2nd round and Hardin the final round.



Super Senior Kathryn Smith of Corinth, MS holed out for an ACE on the par 3, number 8.



Anna Schultz also made an eagle on the par 5, number 14 when she dropped it in the jar from 78 yards out.

### WSGA Donates to First Tee Program of Tuscaloosa



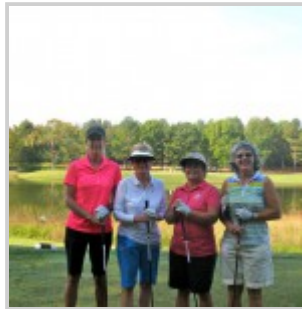


*Susan West, Local Tournament Chairman, presents a donation of \$1772 to Mike Shivetts, Director of the First Tee Program of Tuscaloosa. The money was raised in memory of Georgia Ansfield, state representative for Kentucky from a raffle of a designer golf tournament purse.*

## Ol'Colony Highlights



Caught on camera at the tee box



Posing for the camera one last time.



Louisiana WSGA Senior Players



Brower and Richard



Hart, Cauthen and Mitchell



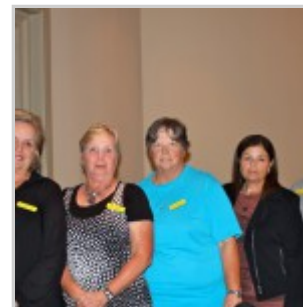
Virginians Ferneyhough and Ford



Texans face off with the Entry  
Chairman



President Carter and Honorary  
Director Draper



Louisiana



North Carolina



Mississippi



Oklahoma



Honorary WSGA Director, Karen Korf, at home with her first love, the scoreboard.



Senior Supers from Mississippi



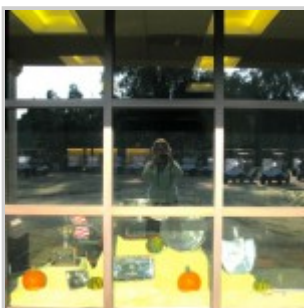
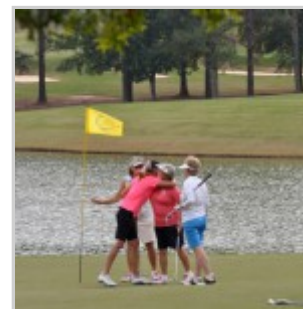
Oklahoma Trio



Alabama the Host State



Louisiana is just a half days drive Groups bond during the struggles away.



Trophies peek through the window for all to see.



70 bunkers to face, some larger than life.



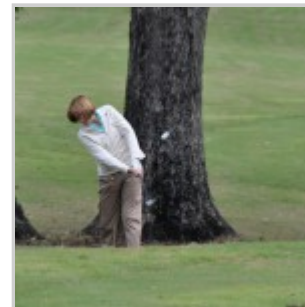
An official thanks for being in Tuscaloosa from the Council Woman, Cynthia Almond.



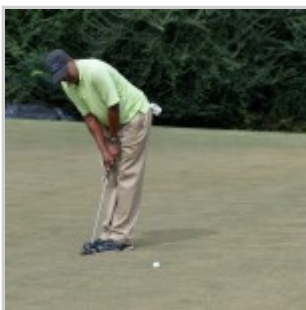
Lisa Graham chipping from the edge of disaster on #8



Jacqueline Walters is not intimidated by #2's landing areas.



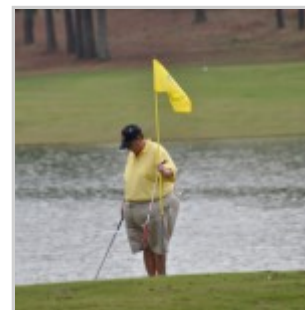
Bonnie Wood gives a lesson in climbing to the top of #2.



Deborah Williams shows the putting form of seniors.



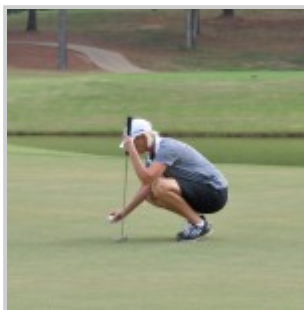
One of the three lefties in the field, Charlie Nash.



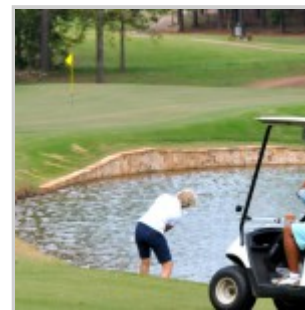
Nancy Conravy loves her retirement job of tending flags



Becky Neal blasts up-hill on #2.

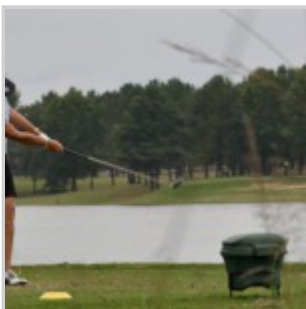


Senior Women can still get down and line up that putt.



The course provided challenging shots for Marci Likens. Soy Butler watches, ready to retrieve the player's ball from the water.





Wanda Hutto, another super senior, shows off that classic swing.



Hardin attacks the par 3, number 8.

~WSGA Press Releases~



WSGA Senior Championship Ol' Colony Golf Complex Tuscaloosa, AL

October 29-31st 54 holes stroke play flighted after 36 holes Field 112 players

yardage: 5580 rating: 73.0 slope: 136

Thursday, October 31, 2013

## Women's Southern Golf Association Crowns 28th Senior Champion Hardin Wins Third WSGA Senior Championship

Mina Hardin of Fort Worth, TX is headed home with the WSGA Katherine Graham Trophy for the third time. Hardin was able to fend off the opening birdie by Brenda Pictor of Marietta, GA by eagling the par 5 number 7. That eagle helped cover her double on # 9. Hardin never let Pictor regain the four shot deficit by shooting a one over 73 for a total of 222.

Brenda Pictor finished with a 76 for sole possession of second with 229 Lecia Alexander, of Stafford, TX finished third with 231.

Carolyn Creekmore, the 2008 Senior Champion, had to survive a scorecard play-off to place fourth. Creekmore's 38 on the back nine cinched her spot from fellow Texan, Becky Neal of Mansfield, who finished with a 40 on the back nine.

Harriet Cauthen of Orange Beach and Cynthia Curry of Charlotte, NC ended up both taking the Super Senior Perpetual Trophy with a dead tie at 258.

Curry slept on a three stroke deficit but managed to make it up shooting 86 while Cauthen shot 89. The super senior trophy was added in 1989 to give those golfers over 70 a chance to showcase that fact that golf is a life long sport.

The WSGA was not sure it could get a full field at a public course under a city parks and recreation department. But, the overwhelming response to the course from the full field of senior golfers from 13 Southern states has them all re-routing leisure travel to I-20 so they can stop and play again.

Janet McMillan of Oklahoma, was so upset that we were putting divots in the fairways of such a beautiful rolling terrain, that she ran out of sand after four holes. Her playing companion took four holes to figure that we were adding 93,000 divots as 108 women played for four days. The Southern Senior footprints are filled as women did their housekeeping.

The 2014 WSGA Senior will cross the border into the State of Texas to Kerrville, TX and River Hills

Country Club. The date is set for Oct. 5-8, 2014.



WSGA Senior Championship

Ol Colony Golf Complex Tuscaloosa, AL

October 29-31st

54 holes stroke play flighted after 36 holes

yardage: 5580 rating: 73.0 slope: 136

WSGA 2nd Round Press Release Wednesday, Oct. 30, 2013.

### Even Par Round Propels Hardin to the Lead at Ol'Colony.

Mina Hardin of Fort Worth, TX managed to make three birdies to cover up her three bogeys to shoot the low round of the tournament at the WSGA Senior at Ol Colony, an even par 72. Lou Hart of Meridian, MS, 1st round leader, is tied with Brenda Pictor of Marietta, GA for second place just four shots back of Hardin.

Alone in fourth place is Nancy Beck of Dallas, TX pulling out of the 5th place jam from the 1st round with a 75 for a total of 154. Lecia Alexander of Stafford and Becky Neal of Mansfield are just one stroke back of Beck in the 5th place tie.

The Super Senior battle is still very close with the Alabamian, Harriet Cauthen of Orange Beach, pulling away by three strokes from defending super senior champion, Cynthia Curry of Charlotte, NC.

Two eagles quickly made news on the course as Anita Venner of Monrovia, MD chipped in on the par five number 7 from 60 yards. Anna Schultz of Rockwell, TX showed how to take dead aim from 78 yards on the par 5 number 14.

Martha Lang of Birmingham made the Championship flight but remains 13 strokes off the lead.

The final round will start at 9 a.m. with a shotgun starts. Awards will follow immediately after play around the indoor scoreboard.

Karen Koerner WSGA Publicity [kkamera@consolidated.net](mailto:kkamera@consolidated.net)

## Previous Champions





left to right Anna Schults, Carolyn Creekmore, Mina Hardin, Taffy Brower, Martha Lang, Harriet Cauthen, Chris Spivey.



WSGA Senior Championship Ol Colony Golf Complex Tuscaloosa, AL October 29-31st 54 holes stroke play flighted after 36 holes yardage: 5580 rating: 73.0 slope: 136

## Mississippian, Lou Hart, leads the WSGA Senior at Ol'Colony

Lou Hart of Meridian, MS leads after the first round of the WSGA Senior at Ol' Colony Golf Complex in Tuscaloosa, AL. Hart managed to birdie the difficult uphill #2 to cover her bogey on #6 for an even par on the first nine.

The back nine played a little more difficult for most players. Hart managed a 39 on the back to lead former WSGA Champion, Mina Harden of Fort Worth, TX by two strokes. Brenda Pictor of Marietta, GA matched Hardin's 77 to tie for second in the first round scoring. Carolyn Creekmore, 2008 WSGA Senior Champion, managed a consistent round of 39-39 to join in the foursome of Hart, Hardin, and Pictor for Wednesday's pairing.

Martha Lang, 2005 WSGA Champion heads a group tied for 5th with Lecia Alexander of Stafford, TX, Anita Venner of Monroe, MD, and Nancy Beck of Dallas, TX all shooting a solid 79.

The top eight will be starting at 10:00 a.m. on Wednesday, the 30th off #1 and #10 tees.

In the Super Senior (over 70 division) a stellar 85 by Harriet Cauthen of Orange Beach, AL matched Cynthia Curry, the defending champion from Charlotte, NC. Both players have similar single digit handicaps and are hoping they can keep their distance from the other 12 Super Senior players.

A crowd will be at the scoreboard to see who makes the Championship flight and the five following flights from their 36 holes of qualifying after play on Wednesday.

Thursday will be a shotgun start of all with the awarding of the Championship Trophy immediately after play.

Karen Koerner WSGA Publicity [kkamera@consolidated.net](mailto:kkamera@consolidated.net)



WSGA Senior Championship Ol Colony Golf Complex Tuscaloosa, AL October 29-31st

54 holes stroke play flighted after 36 holes

yardage: 5580 rating: 73.0 slope: 136

PRE-TOURNAMENT PRESS RELEASE For release Oct 11, 2013

The historic Women's Southern Golf Association, formed in 1911 to provide an Amateur Championship tournament for women of the 15 Southern States and the District of Columbia, has over a hundred Senior Women packing for a golf adventure in the heart of Dixie. Of course, the central location has helped enhance the field with the four corners of our Southern States only a day's drive from Ol Colony Golf Complex in Tuscaloosa, AL.

Entries for the Oct. 29th start of the WSGA Senior include players from 13 of the member Southern States. Seven former winners of the WSGA Senior Championship will be on hand to try, once again, to take the trophy home to their states. The Entry Chairman, Jo Glenn reports the largest field in over six years due to the central location and the top ranking of the course. Check the WSGA website and the entry chairman for spots available due to last minute cancellations.

Florida has won more senior titles since the senior tournament was formed in 1986. With tropical weather to hone golf skills year round, it is only natural that the Katherine Graham Trophy, will arrive in the arms of Taffy Brower of Boynton Beach, who captured the crown in the rolling hills of Virginia a year ago. Brower may have to challenge a new comer to Florida in Meg Giusti of The Villages. Giusti played under the Maryland Flag last year finishing 4th.

Texas will be the most represented state with 20 competitors. This group from the Lone Star State will be led by three former WSGA Senior Champions: Mina Hardin of Fort Worth (2011 and 2012), Carolyn

Creekmore of Dallas (2008), and Anna Schutlz of Rockwall, TX (2006 and 2007). Along with these three, who have held the senior trophy, Texas has a few more strong players on the “watch list” in Leslie Henry of Carrollton, Jewel Malick of Rockwall, Nancy Beck of Dallas and Lecia Alexander of Stafford.

The Host State of Alabama, not to be out done, has three former WSGA winners of the Senior Trophy: Harriet Cauthen of Orange Beach, Chris Spivey of Pell City, and Martha Lang of Birmingham, entered to put pressure on the defending champion and the Texas trio of past winners.

In 1998 Harriet Cauthen was tied after 54 holes of play with defending champion, Toni Wiesner of Fort Worth, TX. History was made on the second hole of the play-off with Cauthen victorious.

In 1999, a new face arrived at the WSGA Senior, holding her drivers license to prove she was had indeed made the senior requirement of 50 years of age. In the end the youthful senior, Chris Spivey, was 7 strokes ahead of the second place winner, Nancy Smith.

Martha Lang won the Senior Championship in 2005. Lang also made history by winning the WSGA Amateur in as a youngster in 1974 and 1980 (Martha Jones). Lang, like Ol Colony Golf Complex’s course designer, Jerry Pate, is a former member of the University of Alabama Collegiate Golf Team.

Mississippi is crossing the state line with 14 players to vie for a senior crown. Their best hopes lie in a foursome of top state senior players: Lou Hart of Meridian, Shelia Haynes of Madison, Sissy Kern of Madison, and Pam Posey of Bailey. A duo from Corinth, MS have their eyes on the Super Senior Trophy: Dolores Stone and Kathryn Smith. But, Pat Ray might take the title South to Ocean Springs.

Oklahoma has 13 players booked for an extended stay at the hotels of Tuscaloosa. These faithful players are usually seen at both the WSGA Amateur and Senior Championships, as they love to travel and compete. They are proud to announce that the state of Oklahoma will host the WSGA Amateur in 2014 at Gaillardia Country Club in Oklahoma City next June.

Arkansas had 10 players entered with their best hope in Tanna Richard of Ft. Smith. Richard humbled a few collegiate golfers making the championship flight in the 2013 WSGA Amateur at Turtle Point Yacht and Country Club in Killen, AL. Arkansas also brings the 2010 Super Senior Champion, Wanda Carroll of Jonesboro to try her grooved skills on Tuscaloosa’s hills.



Tennessee with 6 players and Louisiana with 13 players, prove it is nice to live close to Alabama.

Georgia has 6 players entered with its hope resting on Brenda Pictor of Marietta, who co-captured the Senior Medal honors in the 2010 WSGA Amateur with Carolyn Creekmore. Pictor will find Ol Colony full of the same uneven lies and challenging greens as the Lookout Mountain Course of 2010.

Maryland, has two players entered; Anita Venner of Monrovia, MD and Hae Han of Bethesda. Both players have a chance of making the championship flight with plenty of experience reaching elevated greens.

Virginia's WSGA State Representative, Margaret McGehee of Richmond has managed to get five players to leave the fall foliage and play among the green pines and stately oaks of Ol Colony.

South Carolina has only a single entry in Judy Allardice of Aiken.

North Carolina will, also, be represented by a lone competitor: Cynthia Curry of Charlotte. Curry will be returning the Super Senior Trophy ready to scare away the 13 other ladies having reached their 70th Birthday.

With the guidance and help of Susan West of Tuscaloosa, WSGA's Alabama State Representative, the organization was able to secure its first public course for their senior championship. Never has the WSGA considered a public course for its senior venue. However, Ol Colony Golf Complex, under the Parks and Recreation Department of the City of Tuscaloosa, is a unique course with elements that fit perfectly into the WSGA's vision of a senior championship course. Amazingly, Jerry Pate's design accommodates the top collegiate golfer headed for the PGA Tour and the average public golfer, giving both extremes a place to polish their golf skills. Table top greens, sunken greens, extensive bunkering, generous fairways lined with pines and hardwoods, and an ever present 25 acre lake arranged in 18 ingenious holes of golf, make the course a challenging venue for senior women.

West, had a little help from the University of Alabama's Crimson Tide Golf team in selling the course to the WSGA. Both the men and women's teams, calling Ol' Colony Golf Complex their home, captured the SEC Championship for 2013 then marched on to capture the NCAA Championships. They were aided by the Complex's extensive practice facilities and the unique way Pate designed the course to use all the shots of golf.

Pam Posey, WSGA Mississippi State Representative, commented on the pure joy of playing a course without subdivision houses lining the fairway as she played the course for the first time in October 2. "This is absolutely beautiful; kind of a walk in the countryside." "This is not like any public course I have ever played"; were Posey's words as she topped one of the rolling hills.

Ol'Colony Golf Complex's course has been closed all summer long, with a scheduled renovation of the bunkers and the installation of new hybrid greens especially developed for the Central Alabama climate. The sand in the bunkers, according to John Gray, Head Professional, is now the same consistency throughout the course, which brings the course up to the standards of a PGA tour course. Gray reports that the greens improve each day and will be ready for the test of a full field of WSGA senior women.

Registration begins Monday, Oct. 28th with practice rounds being scheduled by over a hundred senior ladies. Play begins with tee times on Oct. 29th going off both #1 and #10 teeing grounds. Tee times will continue on the Oct. 30th with a crowd gathering after play at the scoreboard as flights are determined after the first 36 holes. A shotgun start at 8:30 a.m. will culminate with the crowning of the 2013 WSGA Senior Champion and 2013 Super Senior Champion immediately following play.

See the WSGA website [www.womens-southerngolfassociation.org](http://www.womens-southerngolfassociation.org) for more information about the organization from its rich history, to its support of 4 academic scholarships. There you will also find the officers, directors, state representatives, and contact information on each facet of the organization's two sponsored tournaments.

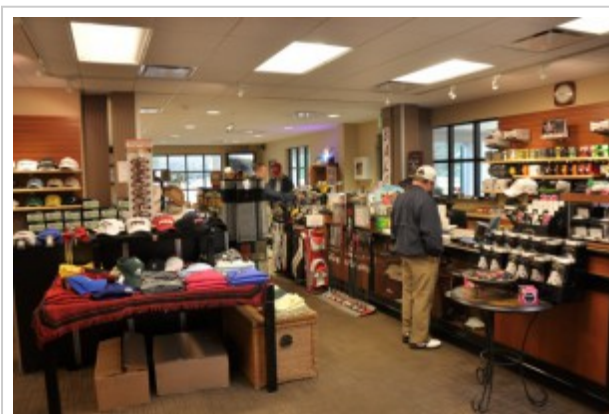
Released by Karen Koerner WSGA Publicity Chairman October 10, 2013 [kkamera@consolidated.net](mailto:kkamera@consolidated.net)  
713 562 2300

The WSGA is delighted to have secured a unique public course for our Senior tournament in Ol' Colony Golf Complex of the Parks and Recreation Department of the City of Tuscaloosa, Alabama. This multipurpose building was built with the public golfer and large tournaments in mind. This building houses the pro shop, a grill, a conference room, and a large cart staging area under a high roof. Players can retreat from inclement weather to the shelter of the staging area, have an awards banquet, or gather around the indoor scoreboard.

The pictures that follow were taken in the early spring when the grass was still dormant as an advanced guard of the WSGA toured the facility and played the course.

The course was designed by Jerry Pate, PGA Professional and Course Architect and opened in 2000. Included on the property are a million dollar indoor practice facility (designed by Pate) specifically for the University of Alabama Women's Golf Team and a four sided practice area used for the First Tee Program of Tuscaloosa and the public.

### Ol'Colony Preview Pictures



A well stocked pro shop.



Grill areas of the Ol' Colony Golf Complex ready to feed and refresh you before or after the challenge of the course.



Helen Ferneyhough of Virginia

The first tee shot is actually a blind shot that disappears in the horizon to a sunken fairway, hidden bunkers and a small green. Pictured is immediate Past President, Helen Ferneyhough of Virginia, as she fires her driver dead center. These fairways will be green and the trees full of foliage in late Oct. The average high in late October is 72 degrees. Tournament players should plan on Chamber of Commerce weather during our WSGA Senior Tournament. Heralded as one of the best Public Courses in the Nation, Ol' Colony Golf Complex will provide a challenging venue as the WSGA continues the practice of providing the best courses in the South for our Senior tournaments.





The Lake plays a major part on the 18th hole as players must plot a plan of action that fits their skill levels. A dog-leg right, this hole can be viewed from the outdoor seating outside the grill of the main building.

The Lake plays a major part on the 18th hole as players must plot a plan of action that fits their skill levels. A dog- leg right, this hole can be viewed from the outdoor seating outside the grill of the main building.



Linda Carter

Elevation changes and bunkers make every hole, carved out of the old pine plantation, a delightful challenge of skill and club choice. WSGA President, Linda Carter tests this proposed tee box for Senior golfers.



Director, Judy Allardice of South

Judy Allardice of South Carolina, tests a downhill par three. A wrong choice of club will run to the lake with ease.

# 2013 Women's Southern Senior Championship

## Ol' Colony Golf Complex Tuscaloosa, Alabama

Player Name	City/State	Club	HI
Alexander, Lecia	Stafford, TX	Riverbend CC	2.3
Allardice, Judy	Aiken, SC	Woodside Plantation CC	22.4
Arnold, Cindy	Oklahoma City, OK	The Greens CC	13.2
Arnold, Jo Ann	Hot Springs Village, AR	Hot Springs Village CC	14.0
Balch, Margaret	Maidens, VA	Hermitage CC	6.4
Barlow, Margie	Montgomery, TX	Walden on Lake Conroe	13.1
Beck, Nancy	Dallas, TX	Brook Hollow GC	0.6
Blackmon, Evelyn Byrd	Nashville, TN	Belle Meade CC	6.6
Bousquet, Connie	Birmingham, AL	Greystone G&CC	3.2
Brower, Taffy	Boynton Beach, FL	Quail Ridge CC	2.1
Brown, Barbara	Carrollton, GA	Fields Ferry LGA	8.6
Buffat, Jeanne P.	Abita Springs, LA	Money Hill CC	18.7
Butler, Soy	Montgomery, TX	Bentwater Yacht & CC	13.9
Campbell, Cathy	Luling, LA	English Turn CC	13.4
Carpenter, Janie	Garland, TX	Hurricane Creek CC	3.4
Carroll, Wanda	Jonesboro, AR	Ridgepointe CC	19.6
Cauthen, Harriet	Orange Beach, AL	Gulf Shores GC	4.6
Conner, Millie	Harrison, AR	Harrison CC	10.6
Conravey, Nancy	Pearl River, LA	Money Hill CC	13.7
Constant, Donna	St Francisville, LA	The Bluffs Golf Resort	9.9
Cowan, Ann	Elk City, OK	Elk City G&CC	6.6
Crawford, Darlene	Chickasha, OK	The Territory	11.4
Creekmore, Carolyn	Dallas, TX	Brook Hollow CC	+1.8
Curry, Cynthia	Charlotte, NC	Myers Park CC	5.1
Davis, Elaine	Edmond, OK	The Greens CC	11.5
Dwyer, Susan	Magnolia Springs, AL	Lakewood GC	9.9
Edwards, Mary	Jonesville, LA	LaSalle GC	13.0
Elkins, Holly	Memphis, TN	Chickasaw CC	12.1
Foley, Elsa	Brandon, MS	Castlewoods CC	4.4
Ford, Sue G.	Lynchburg, VA	Ivy Hill GC	23.1
Gavin, Nancy	Jackson Gap, AL	Moore's Mill GC	3.8
Gibson, Gayle	Dacula, GA	Chicopee Woods GC	11.0



# 2013 Women's Southern Senior Championship

## Ol' Colony Golf Complex Tuscaloosa, Alabama

Player Name	City/State	Club	HI
Giusti, Meg	The Villages, FL	The Villages	0.5
Glenn, Jo	Tulsa, OK	Page Belcher GC	7.4
Graham, Lisa	Orange Beach, AL	Gulf Shores CC	8.5
Gray, Mary Jo	Bossier City, LA	GC at Stonebridge	11.2
Grigg, Cheryl	Sea Island, GA	Ocean Forest GC	3.0
Gutter, Ann	Covington, LA	Tchfuncta CC	10.3
Hagan, Donna	Montgomery, TX	Bentwater Yacht & CC	18.7
Hall, Susan	Tulsa, OK	Cedar Ridge CC	16.1
Han, Hae	Bethesda, MD	Bowie G&CC	10.5
Hanna, Stephanie	Fayette, AL	Indian Hills CC	13.9
Hardin, Mina	Fort Worth, TX	Mira Vista CC	+1.0
Hart, Lou	Meridian, MS	Northwood CC	3.4
Haynes, Sheila	Madison, MS	Reunion G&CC	4.5
Henigan, Diana	Montgomery, TX	Bentwater Yacht & CC	10.3
Henry, Leslie Olive	Carrollton, TX	Brookhaven CC	2.3
Hill, Mitzi	Northport, AL	Indian Hills CC	16.7
Hite, Louise	Kingwood, TX	Kingwood CC	20.5
Holmes, Mary Rehling	Cleveland, GA	Innsbruck GC	4.8
Houston, Linda	Gulf Shores, AL	Cotton Creek CC	20.1
Hsia, Jessie	Tuscaloosa, AL	Indian Hills CC	13.6
Huber, Rebecca	Hot Springs, AR	Hot Springs Village CC	10.2
Huggins, Vicki	The Villages, FL	The Villages	6.0
Hughes, Charlene	Port Gibson, MS	Clear Creek LGA	11.6
Hutto, Wanda	Wayneboro, MS	Canebrake CC	17.4
Huxford, Patti	Cumming, GA	Alpharetta Athletic Club	3.1
Johnson, Samye	Biloxi, MS	Sunkist GC	13.9
Kern, Sissy	Madison, MS	Clear Creek LGA	7.7
Koerner, Karen	Montgomery, TX	Bentwater Yacht & CC	17.3
Lang, Martha	Birmingham, AL	Shoal Creek CC	3.4
Likens, Marci	Winter Springs, FL	Tuscawilla CC	10.2
Magee, Debbie	Bossier City, LA	GC at Stonebridge	12.0
Malick, Jewell	Rockwall, TX	The Honors GC	2.0

# 2013 Women's Southern Senior Championship

## Ol' Colony Golf Complex Tuscaloosa, Alabama

Player Name	City/State	Club	HI
Massey, Ann	Searcy, AR	Searcy CC	18.8
Matson, Barbara	The Villages, FL	The Villages	7.2
McCool, Gerry	Abita Springs, LA	Money Hill CC	18.4
McCravey, Georgia	Chattanooga, TN	The Honors Course	7.2
McDonough, Sharon	Jonesboro, AR	Ridgepointe CC	19.6
McGehee, Margaret	Richmond, VA	CC of Virginia	8.6
McJunkin, Brenda	Louden, TN	Tellico Village GC	16.2
McKey, Julia	Slaughter, LA	Westdale WGA	8.8
McMillin, Janet	Shawnee, OK	Shawnee Elks GC	16.4
Meaux, Becky	Lake Arthur, LA	Jennings GC	9.6
Meyer, Donna Kay Avery	Nassau Bay, TX	Sequoia GC	7.1
Miitchell, Becky	Conroe, TX	River Plantation CC	8.1
Mullins, Linda	Cleveland, TN	Cleveland CC	5.1
Nagle, Jan	Meeker, OK	Shawnee Elks GC	15.5
Nash, Charlie	Jacksonville, AR	Rebsamen GC	14.2
Neal, Rebecca	Mansfield, TX	Walnut Creek CC	1.4
Nelson, Deborah	Montgomery, TX	Walden on Lake Conroe	17.3
Pictor, Brenda	Marietta, GA	Pinetree CC	+2.1
Posey, Pam	Bailey, MS	Northwood CC	5.0
Rabuck, Shirley	Montgomery, TX	Bentwater Yacht & CC	11.0
Ratcliffe, Carole	Fort Lauderdale, FL	Coral Ridge CC	8.6
Ray, Pat	Ocean Springs, MS	Sunkist GC	17.4
Rich, Cherie	Oklahoma City, OK	Lake Hefner GC	10.8
Richard, Tanna	Ft Smith, AR	Hardscrabble CC	+0.3
Richey, Cathy	Winter Park, FL	CC of Orlando	5.0
Schultz, Anna	Rockwall, TX	The Honors GC	+1.5
Scott, Maggie	Charleston, TN	Cleveland CC	4.0
Seward, Mattie	Searcy, AR	Searcy CC	14.2
Smith, Kathlyn	Broken Arrow, OK	Page Belcher GC	13.6
Smith, Kathryn	Corinth, MS	Hillandale CC	9.8
Smith, Melanie	Hoover, AL	RTJ Oxmoor Valley	11.4
Smith, Sandra	Delhi, LA	Black Bear Golf Course	10.5

# 2013 Women's Southern Senior Championship

## Ol' Colony Golf Complex Tuscaloosa, Alabama

Player Name	City/State	Club	HI
Spivey, Chris	Pell City, AL	Pine Harbor G & Raquet Club	6.8
Squires, Sandra	Searcy, AR	Searcy CC	17.6
Stone, Doloris	Corinth, MS	Hillandale CC	13.7
Stoute, Chris	Westlake, LA	National GC of Louisiana	9.8
Venner, Anita	Monrovia, MD	Redgate Golf Course	6.7
Viault, Anne	Kingwood, TX	The Clubs of Kingwood	21.2
Vogel, Debbie	Hattiesburg, MS	Canebrake CC	16.9
Walters, Jacquelyn	Laurel, MS	Dixie GC	11.3
Weaver, Rochelle	Resaca, GA	Fields Ferry LGA	10.4
Whatley, Rose	Ardmore, OK	Dornick Hills G&CC	16.7
Wheat, Diane	Oklahoma City, OK	The Greens	18.0
Williams, Deborah	Gulfport, MS	Gulf Hills GC	3.0
Williams, Nancy	Richmond, VA	CC of Virginia	10.1
Wood, Bonnie	Vonore, TN	Oakridge CC	7.2
Wortham, Lindsay	Richmond, VA	CC of Virginia	1.3
Zeiders, LaDonna	Edmond, OK	River Oaks GC	14.2



# Womens Southern Golf Association

Organized 1911

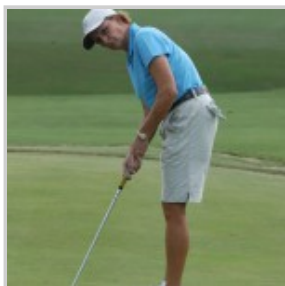
[About](#) [Membership](#) [Scholarships](#) [Senior Championship](#) [Amateur Championship](#)

[Mid-Amateur Championship](#) [Archives](#) [Links](#)

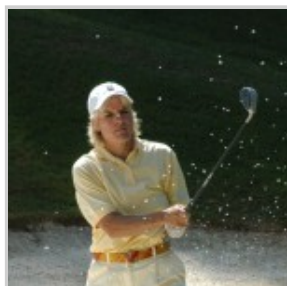
## 2013 Senior Players to Watch

January 29, 2014

**Five former WSGA Senior Champions make the player watch list**



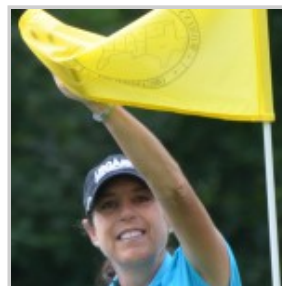
Anna Schultz  
Rockwall, TX (2006  
& 2007)



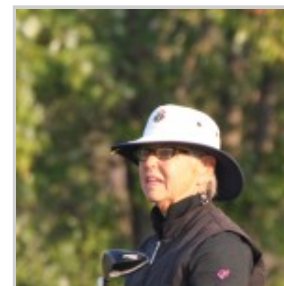
Carolyn Creekmore  
Dallas, TX (2008)



Martha Lang  
Birmingham, AL  
(2005)



Mina Hardin Fort  
Worth, TX (2010 &  
2011)



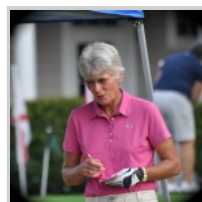
Defending  
Champion Taffy  
Brower Boynton, FL  
(2004 & 2012)

**You'll definitely want to keep your eye on these top players as they battle for the 2013 Senior Championship.**

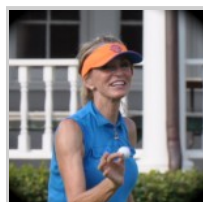
**You can monitor each player's performance by checking the daily results!**



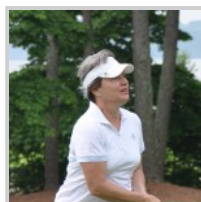
Lecia  
Alexander  
Stafford, TX



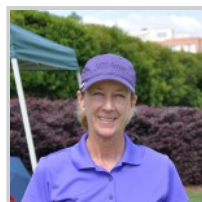
Jewell Malick  
Rockwall, TX



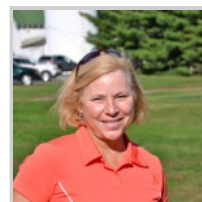
Leslie Henry  
Carrollton, TX



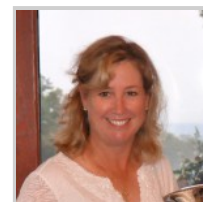
Tanna  
Richard Ft.  
Smith, AR



Nancy Beck  
Dallas, TX



Meg Giusti  
Villages, FL



Brenda Pictor  
Marietta, GA

January 29, 2014 in SENIOR.

[2013 Amateur Field of Players →](#)

**2013 Women's Southern Senior Championship**  
**Ol' Colony Golf Complex - Tuscaloosa, AL**  
**October 29 - 31, 2013**

**Final Results**

**Championship**

- 1 Mina Hardin, Fort Worth, Texas - 77-72-73--222
- 2 Brenda Pictor, Marietta, Ga. - 77-76-76--229
- 3 Lecia Alexander, Stafford, Texas - 79-76-76--231
- 4 Carolyn Creekmore, Dallas, Texas - 78-78-76--232
- 5 Becky Neal, Mansfield, Texas - 82-73-77--232
- 6 Nancy Beck, Dallas, Texas - 79-75-80--234
- 7 Lou Hart, Meridian, Miss. - 75-78-81--234
- 8 Anna Schultz, Rockwall, Texas - 80-82-74--236
- 9 Cheryl Grigg, Sea Island, Ga. - 80-81-83--244
- 10 Donna Kay Avery Meyer, Nassau Bay, Texas - 86-77-82--245
- 11 Anita Venner, Monrovia, Md. - 79-79-89--247
- 12 Martha Lang, Birmingham, Ala. - 79-83-87--249
- 13 Linda Mullins, Cleveland, Tenn. - 84-80-93--257

**First Flight**

- 1 Taffy Brower, Boynton Beach, Fla. - 84-85-72--241
- 2 Tanna Richard, Ft Smith, Ark. - 85-81-76--242
- 3 Deborah Williams, Gulfport, Miss. - 87-79-77--243
- 4 Meg Giusti, The Villages, Fla. - 85-81-78--244
- 5 Chris Spivey, Pell City, Ala. - 84-83-79--246
- 6 Jewell Malick, Rockwall, Texas - 81-89-79--249
- 7 Maggie Scott, Charleston, Tenn. - 87-82-80--249
- 8 Leslie Olive Henry, Carrollton, Texas - 83-83-83--249
- 9 Patti Huxford, Cumming, Ga. - 82-85-84--251
- 10 Sheila Haynes, Madison, Miss. - 84-83-84--251
- 11 Nancy Gavin, Jackson Gap, Ala. - 88-82-83--253
- 12 Janie Carpenter, Garland, Texas - 87-83-83--253
- 13 Ann Cowan, Elk City, Okla. - 84-82-88--254
- 14 Vicki Huggins, The Villages, Fla. - 81-85-90--256
- 15 Harriet Cauthen, Orange Beach, Ala. - 85-84-89--258
- 16 Sissy Kern, Madison, Miss. - 88-82-91--261



## Final Results

### Second Flight

- 1 Evelyn Byrd Blackmon, Nashville, Tenn. - 88-86-81--255
- 2 Connie Bousquet, Birmingham, Ala. - 86-87-82--255
- 3 Elsa Foley, Brandon, Miss. - 90-83-82--255
- 4 Rebecca Huber, Hot Springs, Ark. - 85-88-83--256
- 5 Elaine Davis, Edmond, Okla. - 92-82-83--257
- 6 Pam Posey, Bailey, Miss. - 86-91-81--258
- 7 Cynthia Curry, Charlotte, N.C. - 85-87-86--258
- 8 Becky Mitchell, Conroe, Texas - 85-89-84--258
- 9 Cathy Richey, Winter Park, Fla. - 84-92-85--261
- 10 Margaret McGehee, Richmond, Va. - 87-90-85--262
- 11 Georgia McCravey, Chattanooga, Tenn. - 90-87-87--264
- 12 Diana Henigan, Montgomery, Texas - 88-85-92--265
- 13 Margaret Balch, Maidens, Va. - 87-88-90--265
- 14 Shirley Rabuck, Montgomery, Texas - 88-91-87--266
- 15 Becky Meaux, Lake Arthur, La. - 90-89-94--273
- 16 Ann Gutter, Covington, La. - 85-94-WD--WD

### Third Flight

- 1 Bonnie Wood, Vonore, Tenn. - 92-89-85--266
- 2 Melanie Smith, Hoover, Ala. - 93-87-88--268
- 3 Carole Ratcliffe, Fort Lauderdale, Fla. - 93-90-86--269
- 4 Rochelle Weaver, Resaca, Ga. - 89-93-88--270
- 5 Chris Stoute, Westlake, La. - 87-97-88--272
- 6 Mary Edwards, Jonesville, La. - 95-91-89--275
- 7 Nancy Williams, Richmond, Va. - 92-93-91--276
- 8 Jessie Hsia, Tuscaloosa, Ala. - 91-95-90--276
- 9 Soy Butler, Montgomery, Texas - 93-90-93--276
- 10 Marci Likens, Winter Springs, Fla. - 93-93-91--277
- 11 Hae Han, Bethesda, Md. - 96-91-90--277
- 12 Julia McKey, Slaughter, La. - 92-96-91--279
- 13 Jo Glenn, Tulsa, Okla. - 86-98-95--279
- 14 Babs Matson, The Villages, Fla. - 96-90-93--279
- 15 Samye Johnson, Biloxi, Miss. - 95-93-93--281
- 16 Jacquelyn Walters, Laurel, Miss. - 95-93-105--293

## Final Results

### Fourth Flight

- 1 Lisa Graham, Orange Beach, Ala. - 98-92-86--276
- 2 Barbara Brown, Carrollton, Ga. - 98-93-88--279
- 3 Cherie Rich, Oklahoma City, Okla. - 96-94-89--279
- 4 Wanda Hutto, Waynesboro, Miss. - 92-97-92--281
- 5 Donna Constant, St Francisville, La. - 91-101-92--284
- 6 Kathryn Smith, Corinth, Miss. - 101-93-91--285
- 7 Stephanie Hanna, Fayette, Ala. - 89-100-97--286
- 8 Sandra Smith, Delhi, La. - 96-95-95--286
- 9 Cindy Arnold, Oklahoma City, Okla. - 91-98-98--287
- 10 Mattie Seward, Searcy, Ark. - 99-93-96--288
- 11 Charlie Nash, Jacksonville, Ark. - 99-94-95--288
- 12 Darlene Crawford, Chickasha, Okla. - 97-92-99--288
- 13 Nancy Conravey, Abita Springs, La. - 97-97-95--289
- 14 Debbie Vogel, Hattiesburg, Miss. - 98-97-95--290
- 15 Pat Ray, Ocean Springs, Miss. - 97-97-99--293
- 16 Margie Barlow, Montgomery, Texas - 95-97-102--294
- 17 Louise Hite, Kingwood, Texas - 99-96-106--301

### Fifth Flight

- 1 Debbie Magee, Bossier City, La. - 99-98-87--284
- 2 Susan Dwyer, Magnolia Springs, Ala. - 103-93-92--288
- 3 Cathy Campbell, Luling, La. - 101-96-92--289
- 4 Vicki Hogue, Cropwell, Ala. - 99-100-96--295
- 5 LaDonna Zeiders, Edmond, Okla. - 102-98-96--296
- 6 Mary Jo Gray, Bossier City, La. - 103-93-101--297
- 7 Kathlyn Smith, Broken Arrow, Okla. - 100-97-101--298
- 8 Janet McMillin, Shawnee, Okla. - 103-94-102--299
- 9 Jo Ann Arnold, Hot Springs Village, Ark. - 104-98-97--299
- 10 Brenda McJunkin, Loudon, Tenn. - 100-103-97--300
- 11 Doloris Stone, Corinth, Miss. - 98-103-100--301
- 12 Deborah Nelson, Montgomery, Texas - 101-99-101--301
- 13 Jeanne P. Buffat, Abita Springs, La. - 103-100-101--304
- 14 Mitzi Hill, Northport, Ala. - 98-103-109--310
- 15 Ann Massey, Searcy, Ark. - 100-100-111--311
- 16 Millie Conner, Harrison, Ark. - 98-103-97--298

## Final Results

### Sixth Flight

- 1 Gerry McCool, Abita Springs, La. - 99-107-102--308
- 2 Rose Whatley, Ardmore, Okla. - 104-102-104--310
- 3 Linda Houston, Gulf Shores, Ala. - 109-100-102--311
- 4 Diane Wheat, Oklahoma City, Okla. - 103-103-105--311
- 5 Judy Allardice, Aiken, S.C. - 104-101-106--311
- 6 Donna Hagan, Montgomery, Texas - 103-104-105--312
- 7 Karen Koerner, Montgomery, Texas - 103-109-100--312
- 8 Susan Hall, Tulsa, Okla. - 110-105-101--316
- 9 Charlene Hughes, Port Gibson, Miss. - 100-108-110--318
- 10 Ann Glass, Moundsville, Ala. - 108-111-103--322
- 11 Anne Viault, Kingwood, Texas - 111-106-113--330
- 12 Jan Nagle, Meeker, Okla. - 110-121-103--334
- 13 Sandra Squires, Searcy, Ark. - 113-111-110--334
- 14 Sue G. Ford, Lynchburg, Va. - 118-107-110--335

#####